

# FreeStyler Fixture Creator 4.9

## Tutorial for American DJ Mega Bar LED

### or similar LED Bars or multiple RGB element LED fixtures

The reason I have chosen this fixture is twofold,

- 1) A member on the FreeStyler Support Forum has made a request for the fixture.
- 2) I needed a fixture to be able to show how to create this type of fixture in this tutorial.

Multi RGB element fixtures (LED Bars) along with lasers seem to give the majority of people real problems when trying to create a fixture for them.

I am not going to talk about lasers in this tutorial only multi RGB element fixtures and specifically the American DJ Mega Bar LED.

The main reason I see for this because they can have a lot of channels, have lots of different operating mode with differing number of channels per mode and when in the higher channel modes a lot of RGB elements.

The current Fixture Creator only supports 1 RGB element so creating a fixture with multiple RGB elements would be a real problem.

Hopefully with this tutorial I can show you my way of creating these types of fixture. I am not saying this is the best or the easiest way but it is away that works and hopefully you will understand how it works.

Disclaimer: -

I do not physically have this fixture so it is untested, it may not cover every aspect of the fixtures capabilities but hopefully it will cover the most used. If it does not cover what you want then you can have a look at the fixtures in Fixture Creator and try and add that functionality yourself.

This tutorial does not show you how to create the fixture for use in 3D Magic Easy View, to do that you need to run the ScanLibrary program, it is not the same as Fixture Creator but the same method would need to be performed as shown for the Fixture Creator. In the future I will create a tutorial(s) for the ScanLibrary program as well.

The American DJ Mega Bar LED specification and a link to download the manual can be found from the following link.

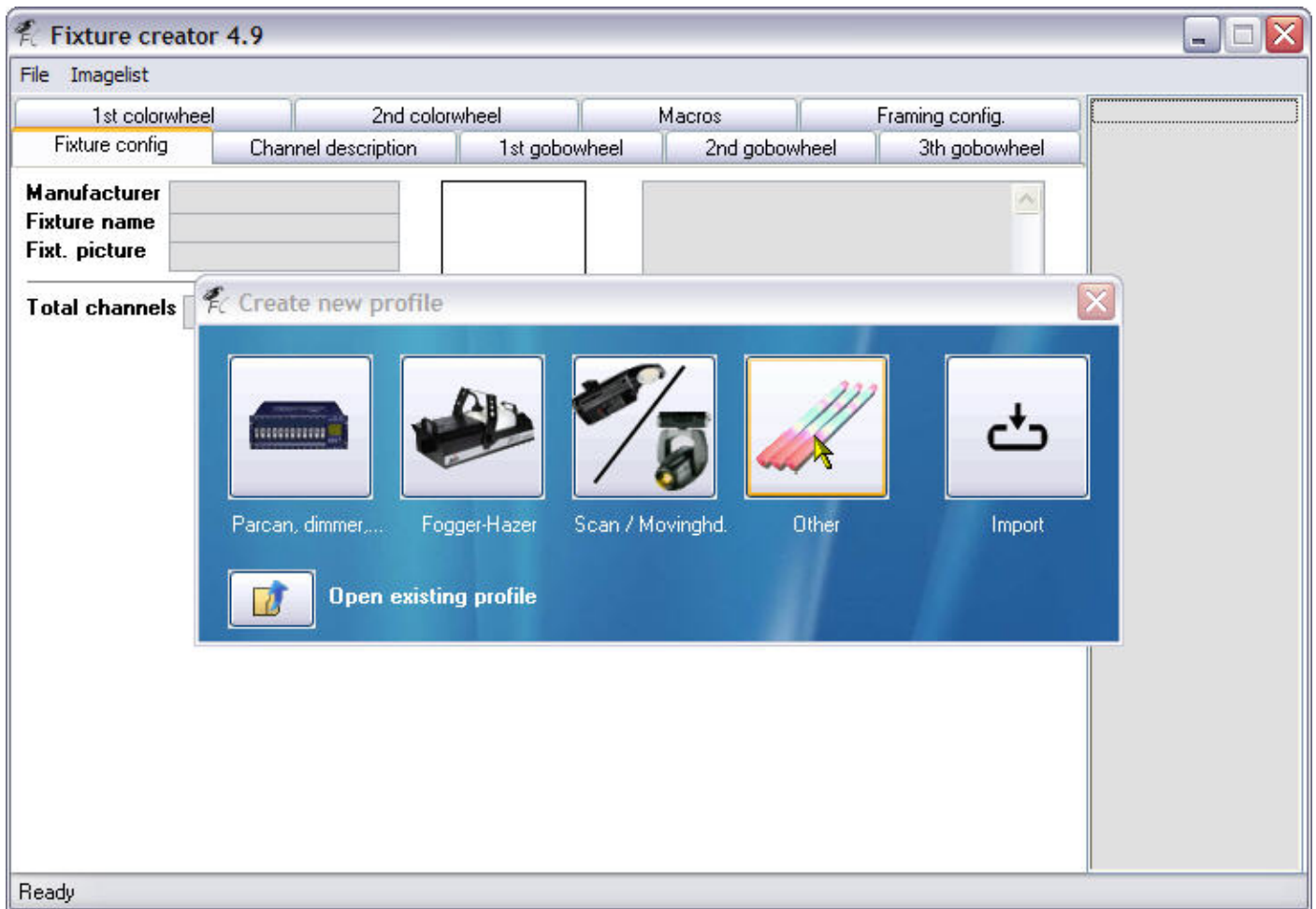
<http://www.americandj.com/ProductDetails.aspx?Category=&ItemNumber=1730>

I will include in the upload this tutorial, the finished fixture(s) and the manual so you can all follow along easily.

The American DJ Mega Bar LED has 6 DMX controlled modes of operation with channels of 2, 3, 4, 6, 7 and 11. I will start with the easiest of these modes and it is not the 2 channel mode but the 3 channel mode, all will be revealed.

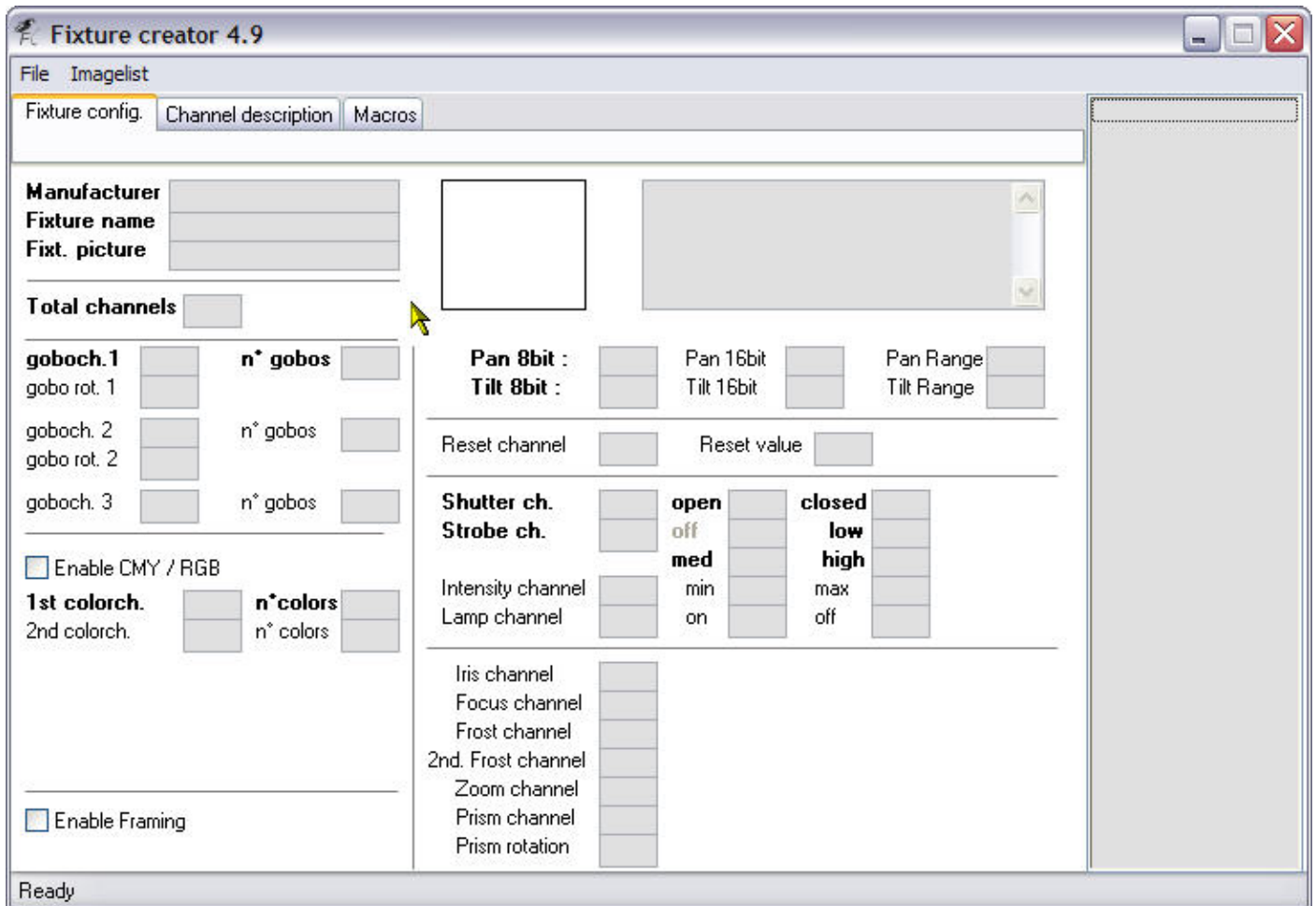
## 3 channel American DJ Mega Bar LED

Start Fixture Creator up, and you should see the image as below.



Click the "Other" button as shown by the mouse pointer above.

You now are in the Fixture Creator program and on the main part of the program the "Fixture config" tab as can be seen in the image below.



So our first task is to fill in the **Manufacturer** and **Fixture name**.

I would always recommend putting in the proper manufacturer name such as "American DJ" rather than a shortened version such as "ADJ".

If you are creating "custom" fixtures you could always call the manufacturer a unique name that means something to you. As an example I would call the manufacturer "AndreCustom" or something similar.

So put American DJ in the **Manufacturer** input field.

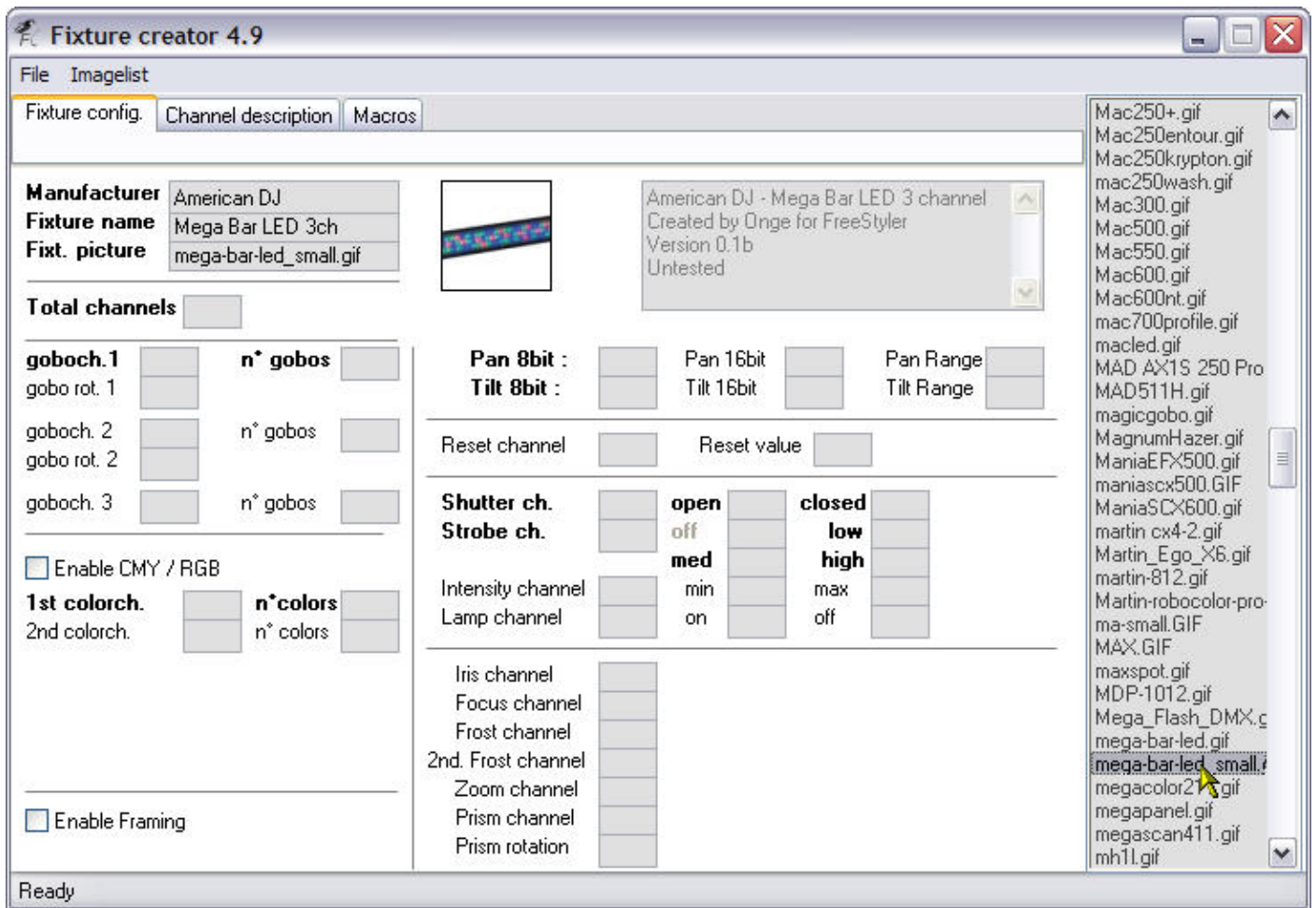
Name, as we are going to create a few differing versions of this fixture we need to ensure that they are unique and meaningful.

For the fixture we are creating now I think we can call it Mega Bar LED 3ch so enter that in the **Fixture name** input field.

Click into the **Fixt. picture** input field and a list of pictures will appear on the right hand side scroll down and click on mega-bar-led\_small.gif in that list and it will appear to the right of the Manufacturer and the Fixture name, also the Fixt. picture field will be filled in with the name.

I am also going to put something in the comment field.

See the next image to see this part completed.

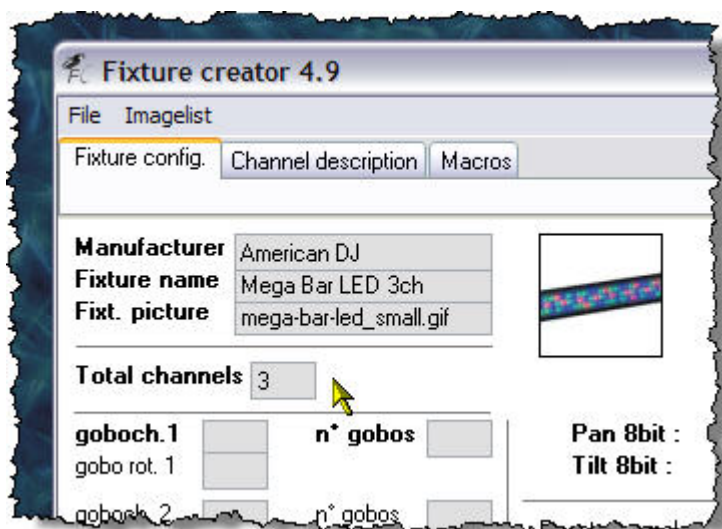


I have only used a part of the image for the Mega Bar LED as it makes it easier here and in FreeStyler.

As you can see I have filled in some basic comments in the comment field as well, this is optional but would recommend use it to put anything you want people to know about this fixture.

Lets carry on, as I mentioned we are doing what I call the simplest fixture for all the modes that the Mega Bar LED has and this is the 3 channel fixture.

Yep you guessed it we need to enter 3 in the **Total channels** input box as can be seen in the image below.

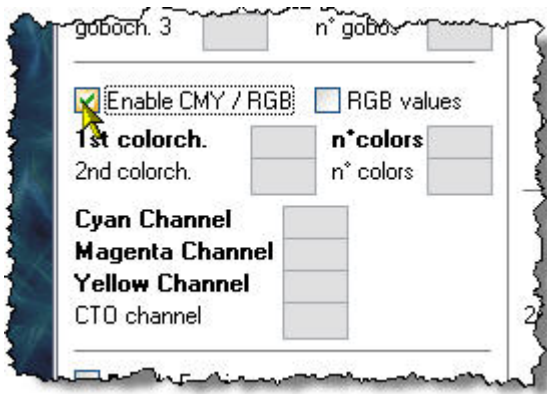


OK so now our fixture knows how many channels, so how do we tell it what channels control what?

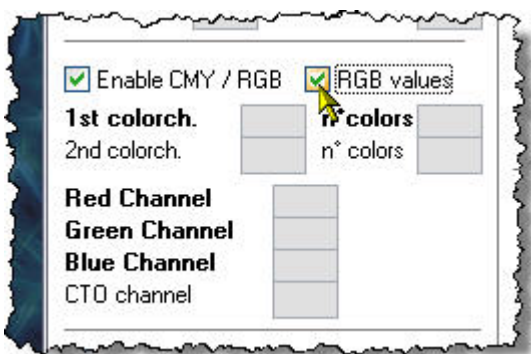
As we know this is an RGB fixture and RGB stands for Red, Green and Blue. They are colours. So let us find the colour section of the Fixture Creator.



Here it is, notice that it has a tick box to **Enable CMY / RGB** well our fixture is RGB so we better enable it by ticking that box.

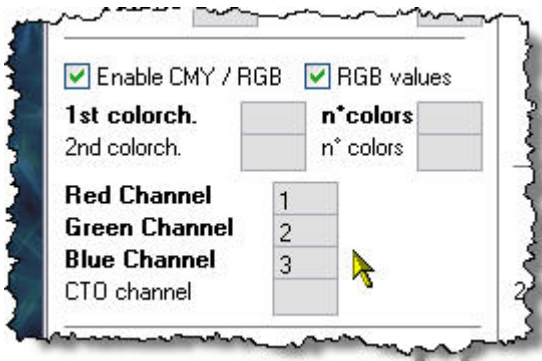


Wow, ticking that box has shown some hidden fields. Look to the right of the tick box we have just ticked and you can see another tick box and it is labelled **RGB values** let's tick that and see what happens.

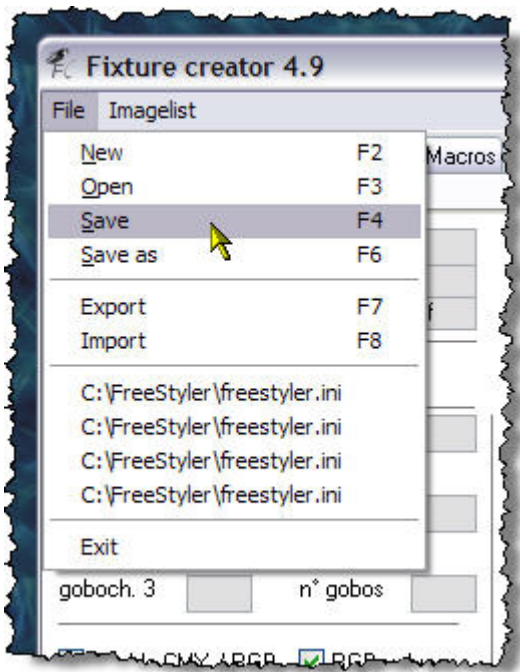


As you can see the fields have now changed **Red Channel**, **Green Channel** and **Blue Channel** which is what our fixture is.

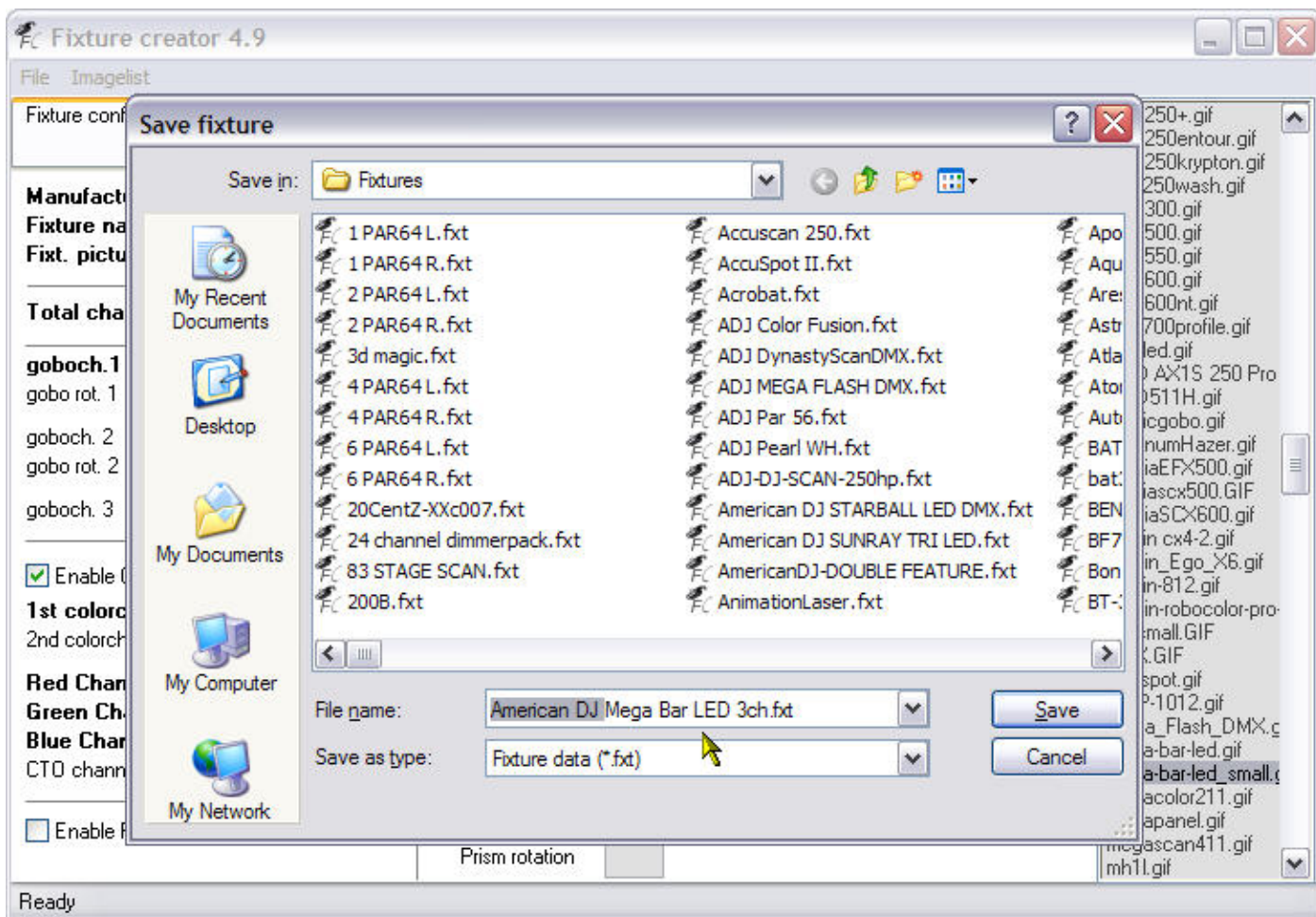
As this fixture is 3 channel and the manual tells us that the red is on 1 and green is on 2 on blue is on 3 we need to put those numbers in those fields. See image below for how it looks completed.



That is it we have entered all the data we need for this fixture.  
No we need to save it and export it. I always export any fixture I create and keep them separate from FreeStyler to ensure that I always can re-install them if I ever need to do a complete/clean re-install of FreeStyler.



Go to the **File** menu and select **Save** and you will get the following save dialogue.



The default name of **Mega Bar LED 3ch.fxt** will be the file name, taken from the **Fixture name** we entered at the beginning.

I always add the manufacturer's name to the front of this as can be seen in the above image. The reason I do this is to make it easier to identify when I am using Windows Explorer in the FreeStyler/Fixtures folder. You do not have to do this.

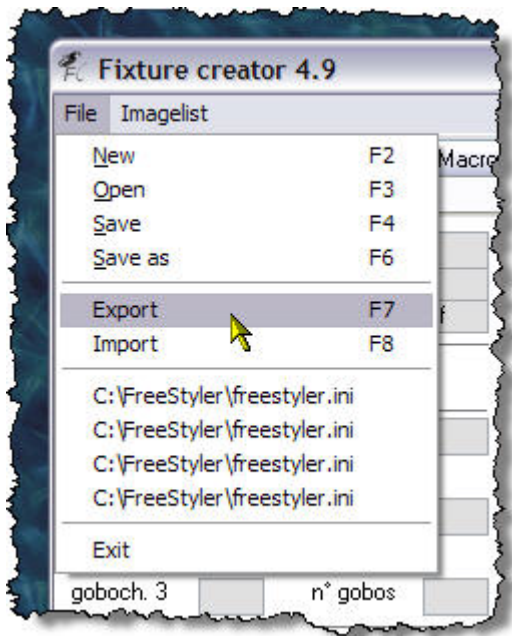
Click the **Save** button and that is done.



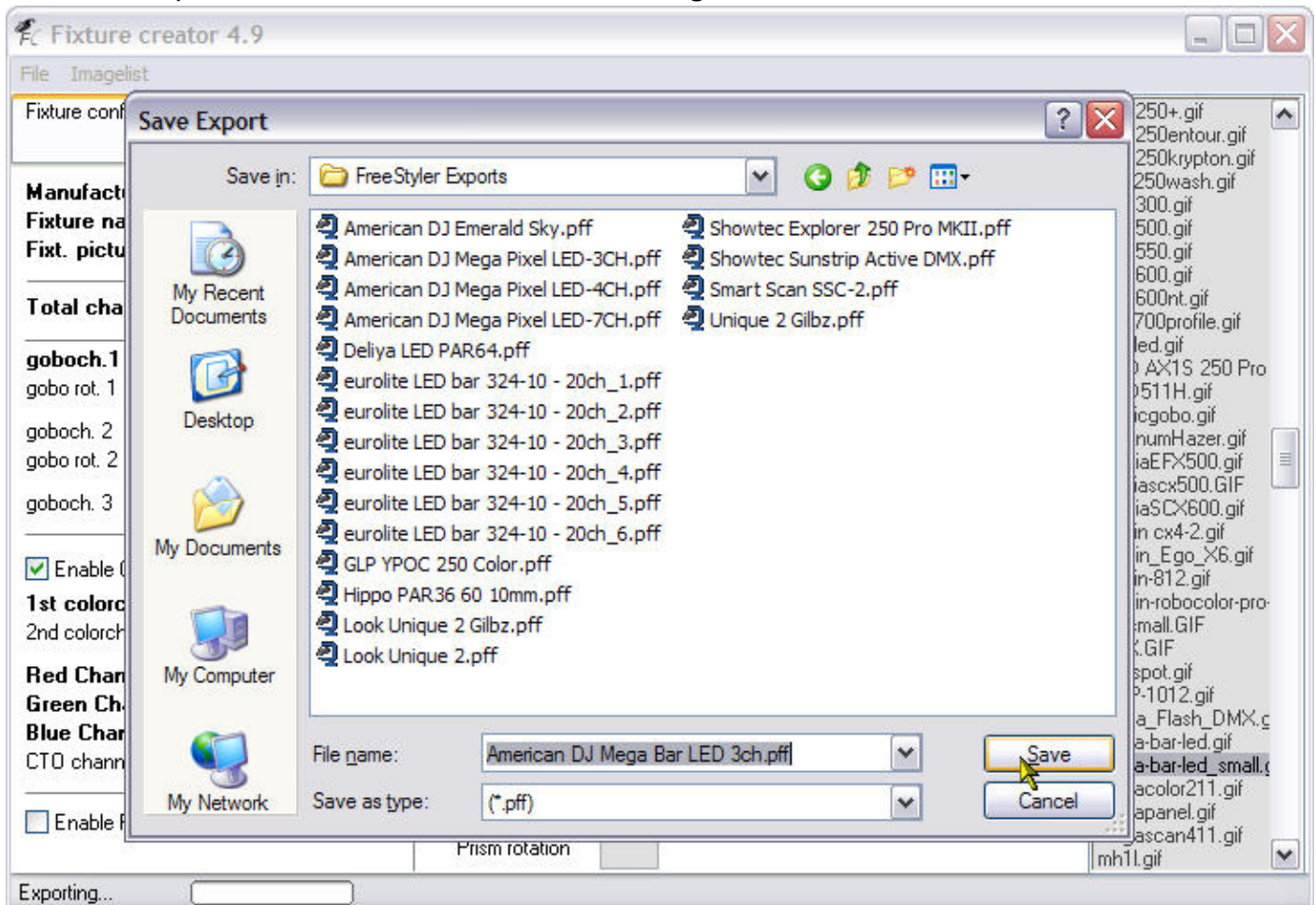
Now to export our fixture.

Exported fixtures are the ones you would upload to the FreeStyler Support Forum or transfer onto another computer for FreeStyler to use. It contains all the information needed in the one file, images, gobos, colours etc.

Go to the **File** menu and select **Export** as shown in the image below.



You will be presented with another save dialogue as shown below.



The filename has the same filename as what was entered for the normal save, so you can just press the **Save** button and that is our fixture exported and you can now exit from the Fixture Creator program and start FreeStyler and add the number of these 3 channel fixtures you want to control.

## 4 Channel American DJ Mega Bar LED

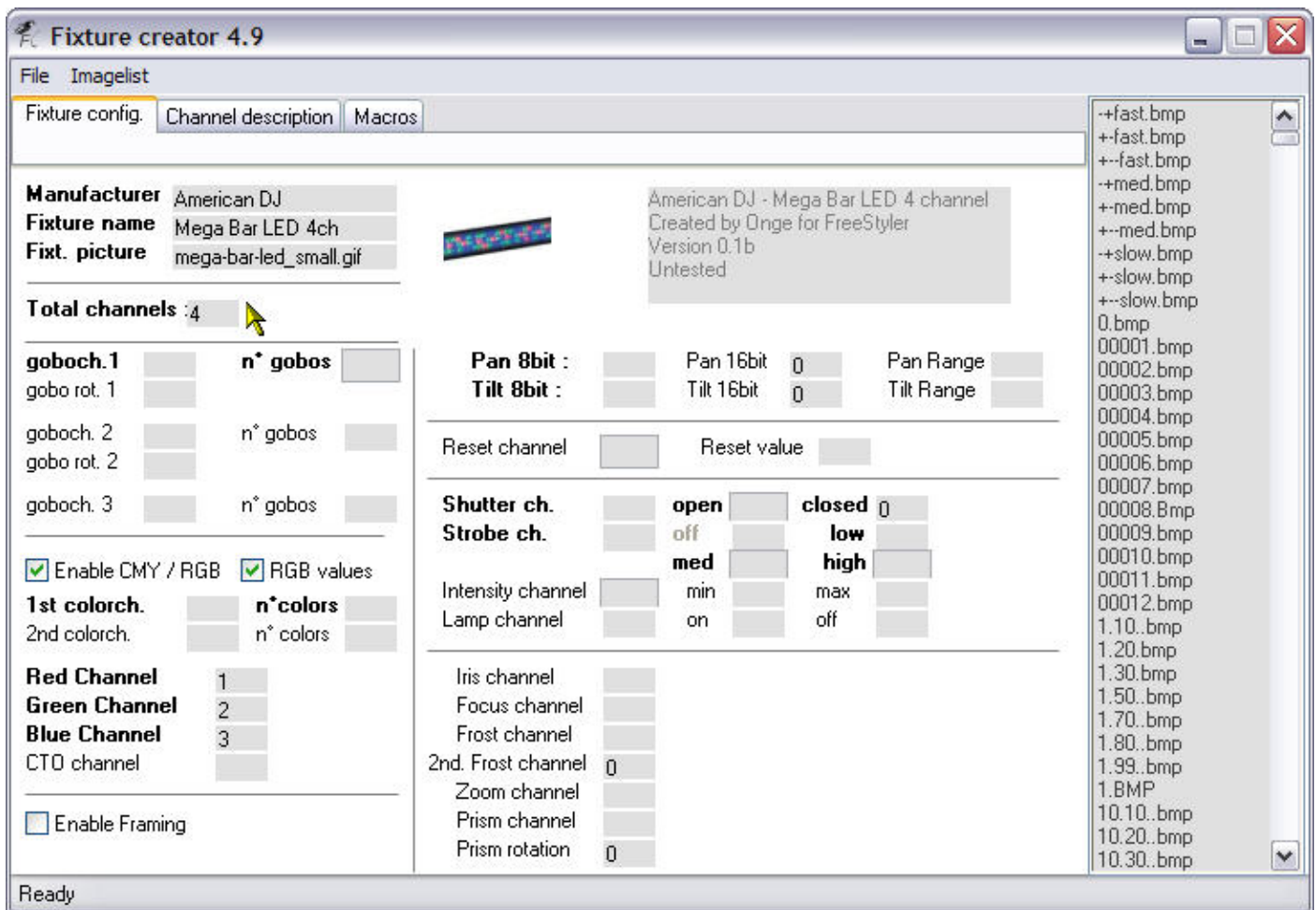
This fixture is created exactly the same way as the 3 channel fixture but has a overall dimmer attached to it.

Let us get started.

Open Fixture Creator and fill in all the information as per the 3 channel fixture described above.

Obviously the **Fixture name** will be Mega Bar LED 4ch and any comments need to be changed as well and the **Total channels** will have to be changed to 4.

It should look like this.

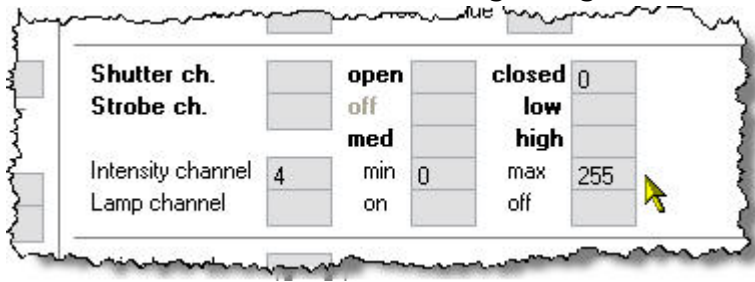


Now all we need to do is add the Dimmer channel to this information.

In FreeStyler it is called the **Intensity channel** and can be found near enough slap bang in the middle of the Fixture Creator on the "Fixture config." tab.

Our dimmer is on channel 4 so we would enter the number 4 in the input box to the right of the **Intensity channel** text and the manual states that the dimmer has values of 0 to 255 they need to be entered in the **min** and **max** fields respectively.

It should look like the following image.



That is it done.

Now save the fixture as instructed before.

Caution if you opened up the 3 channel version of this fixture to work on then do a Save As and adjust the filename accordingly otherwise you will overwrite the existing 3 channel fixture.

Export it as instructed before.

You can close the Fixture Creator program and start FreeStyler and add you fixtures.

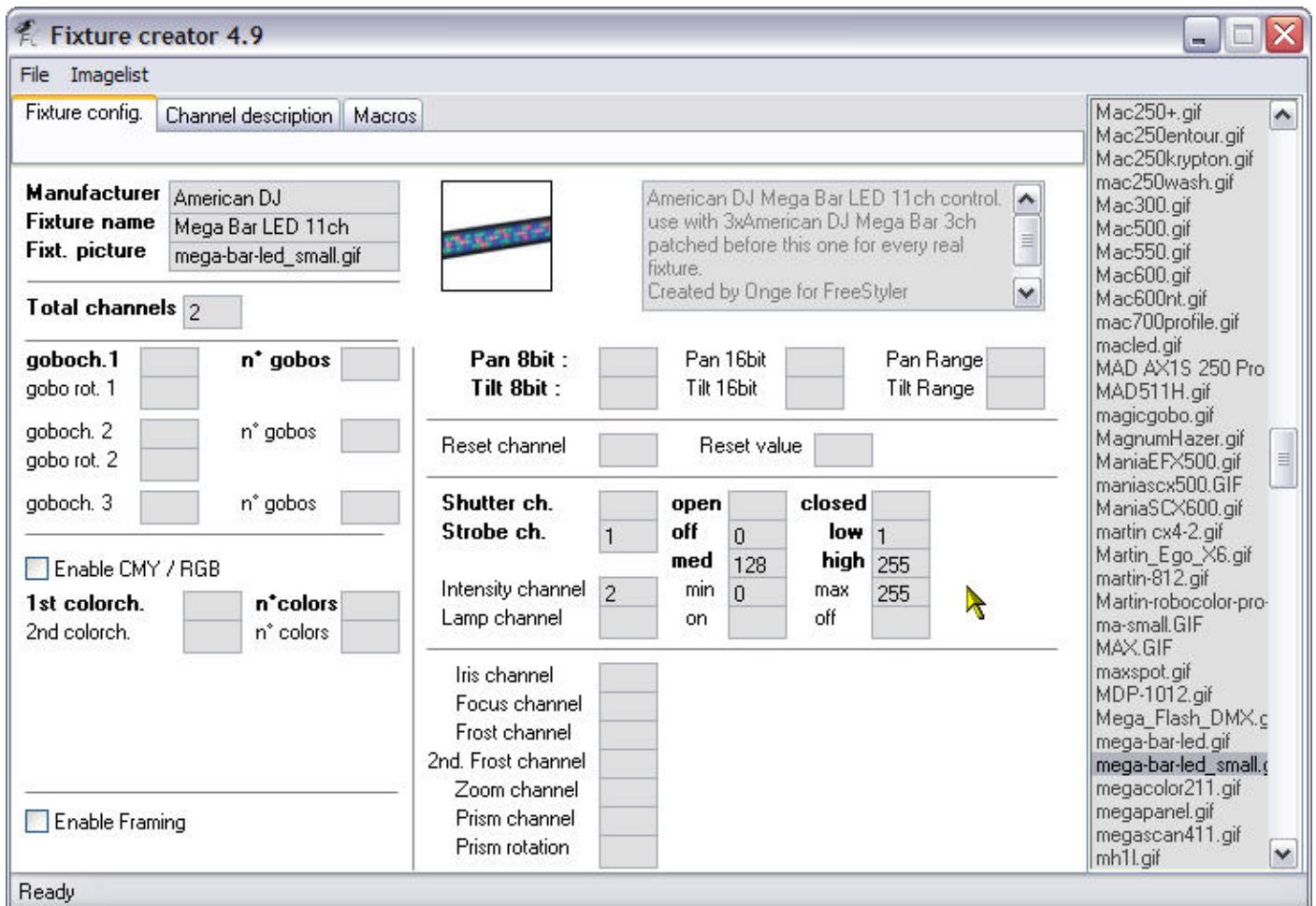
# 11 Channel American DJ Mega Bar LED

We are now going to create the 11 channel version of the American DJ Mega Bar LED, so how are we going to do this as the Fixture Creator only allows 1 RGB element and the American DJ Mega Bar LED has 3 of these RGB elements.

Well the simple answer is you cannot do it but what would be the point of this tutorial if you cannot do it.

What you have to do is to not think of it as one fixture but in this case as 4 fixtures, 3 fixtures for the RGB elements and 1 fixture for the control part (strobe and dimmer). Now strangely enough did we not create a 3 channel RGB fixture in the first part of this tutorial? Yes we did, so now all we have to do is create the control part of this fixture the bit that controls the strobe and the dimmer. It should be easy enough.

Start the Fixture Creator program and click the "Other" button as you did in the previous tutorials.

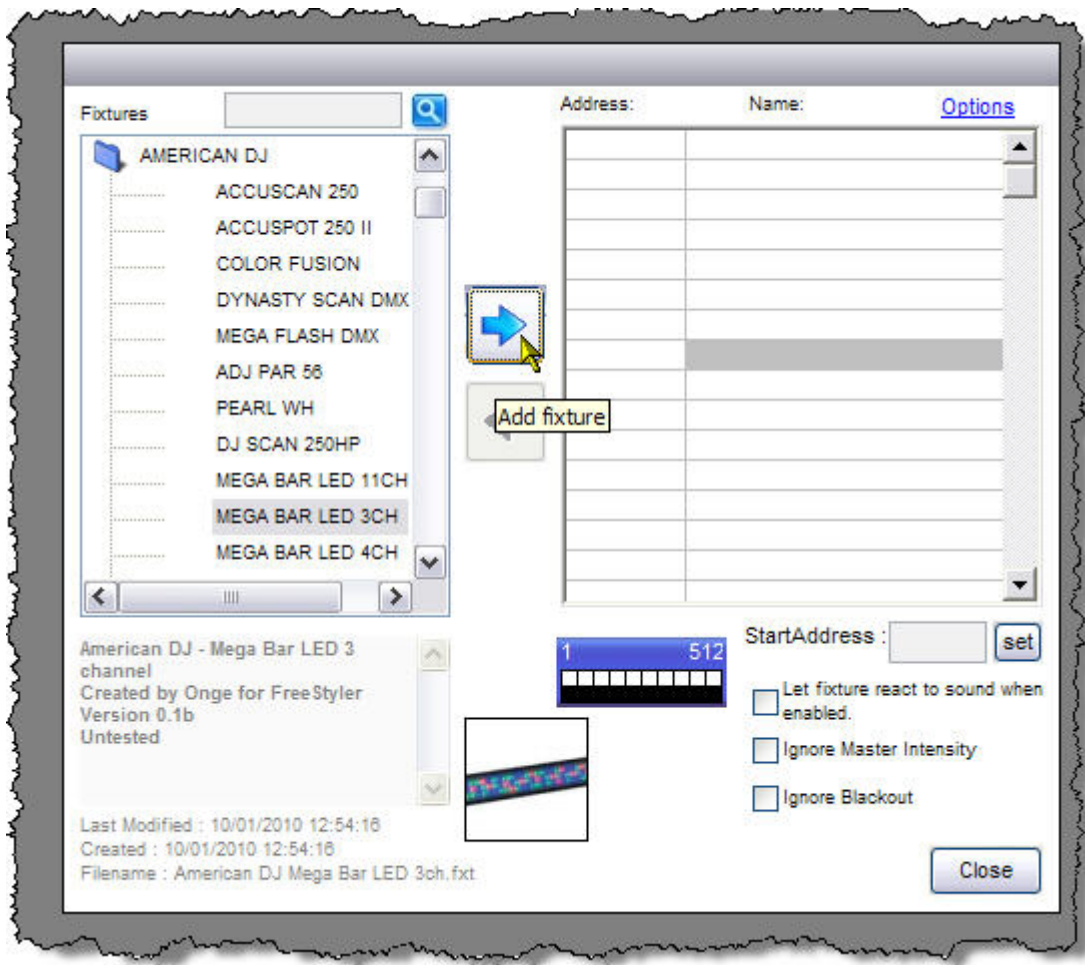


I have filled out all the information for this part of the fixture as can be seen in the image above. Remember this part of the fixture is only for controlling the strobe and dimmer. You might be asking why I have set the channel values of the strobe and dimmer (intensity) to 1 and 2 respectively as this is meant to be an 11 channel fixture. Well this part of the fixture only has 2 channels so it has to be set at 1 and 2. The correct addressing of the channels comes when we patch them into FreeStyler.

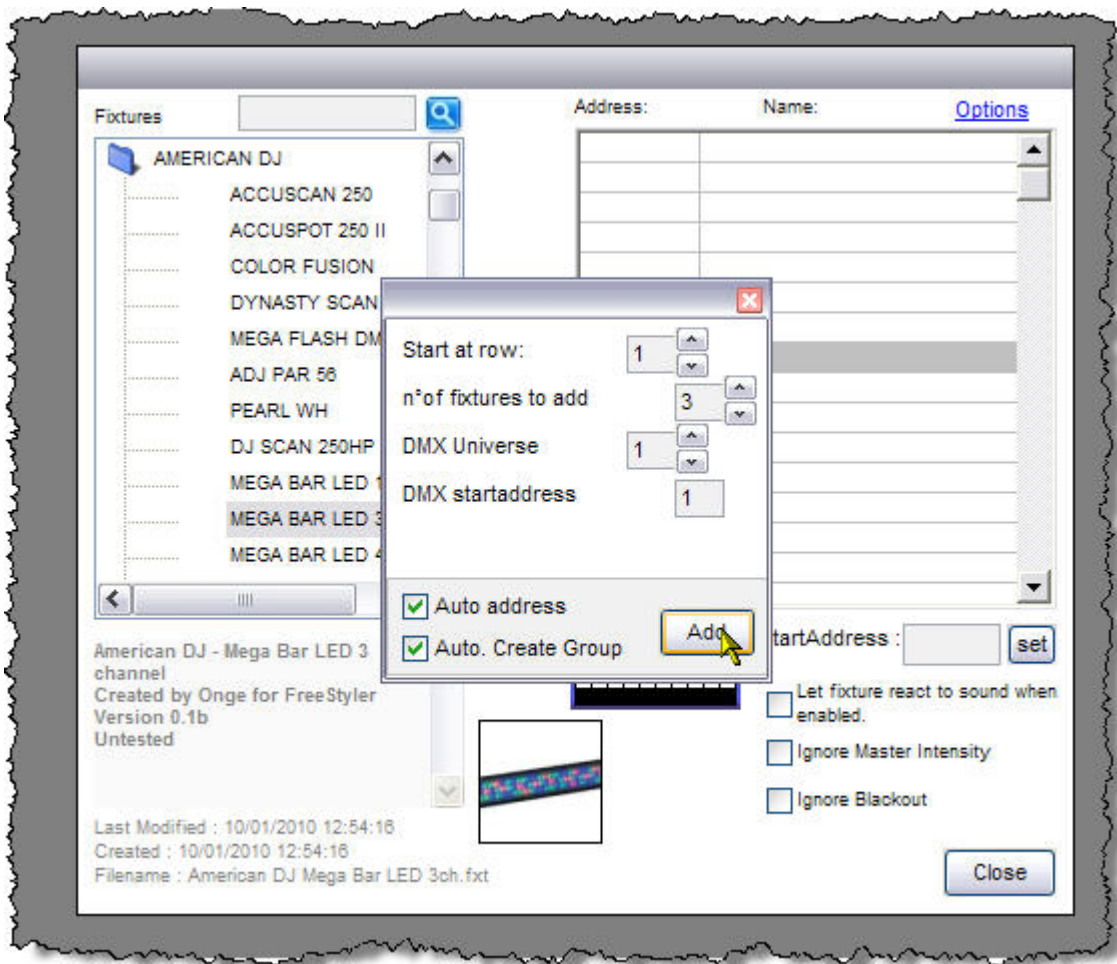
Enter the data as shown above and Save and Export the fixture as before.

Close the Fixture Creator Program and start FreeStyler.

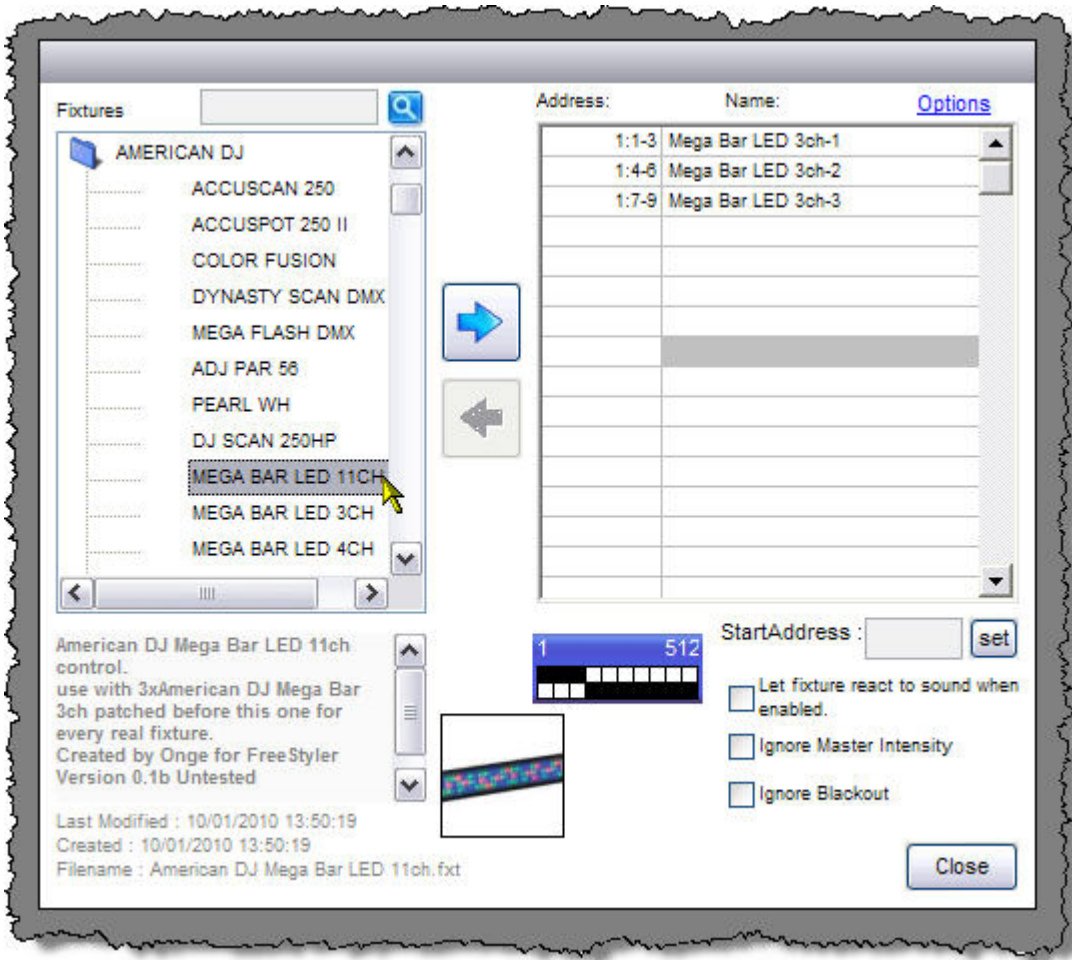
Go to **Setup** and select **Add/Remove fixtures**.



Open the American DJ folder in the panel to the left and click the MEGA BAR LED 3CH fixture and then click the **Add fixture** button as shown.

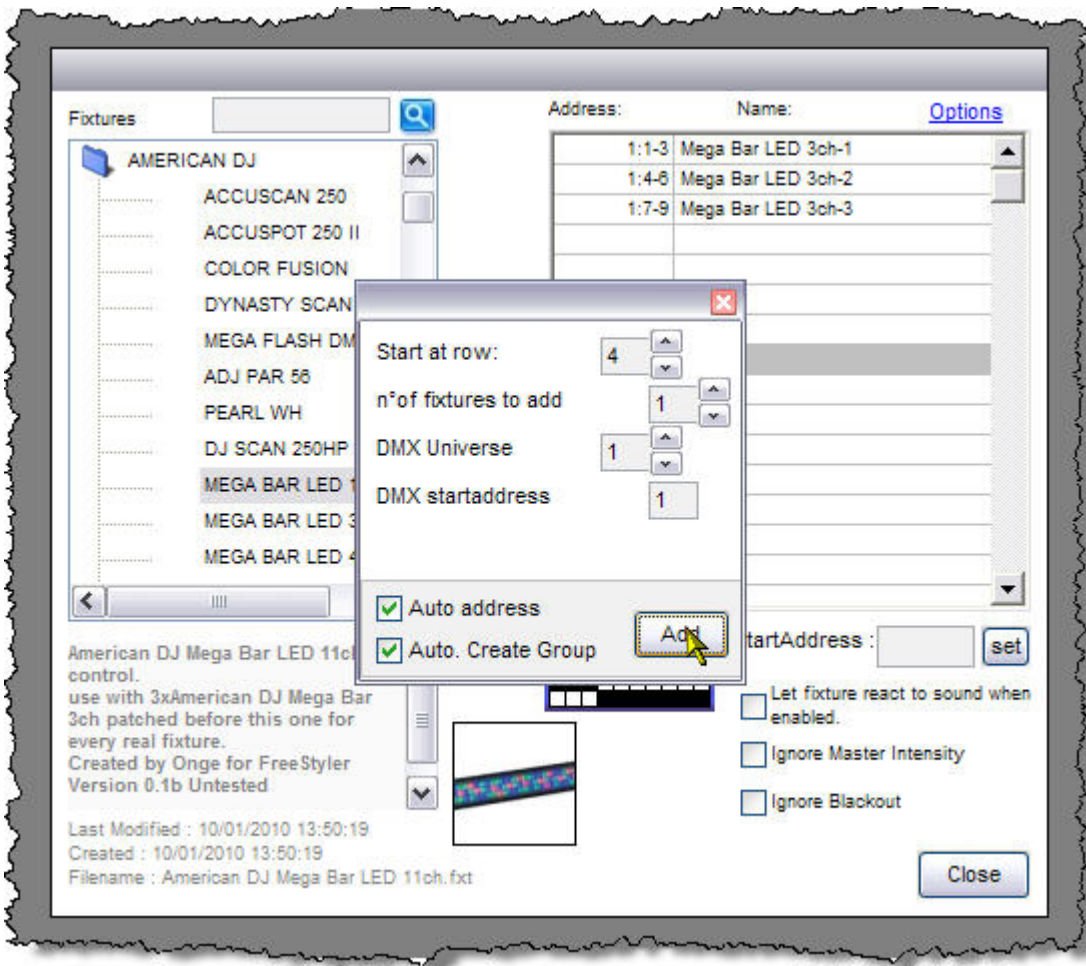


Now remember for 11 channel mode of the American DJ Mega Bar LED fixture we have 3 x RGB elements per 1 real fixture so we set the number of fixtures to add to 3 and then press the **Add** button.

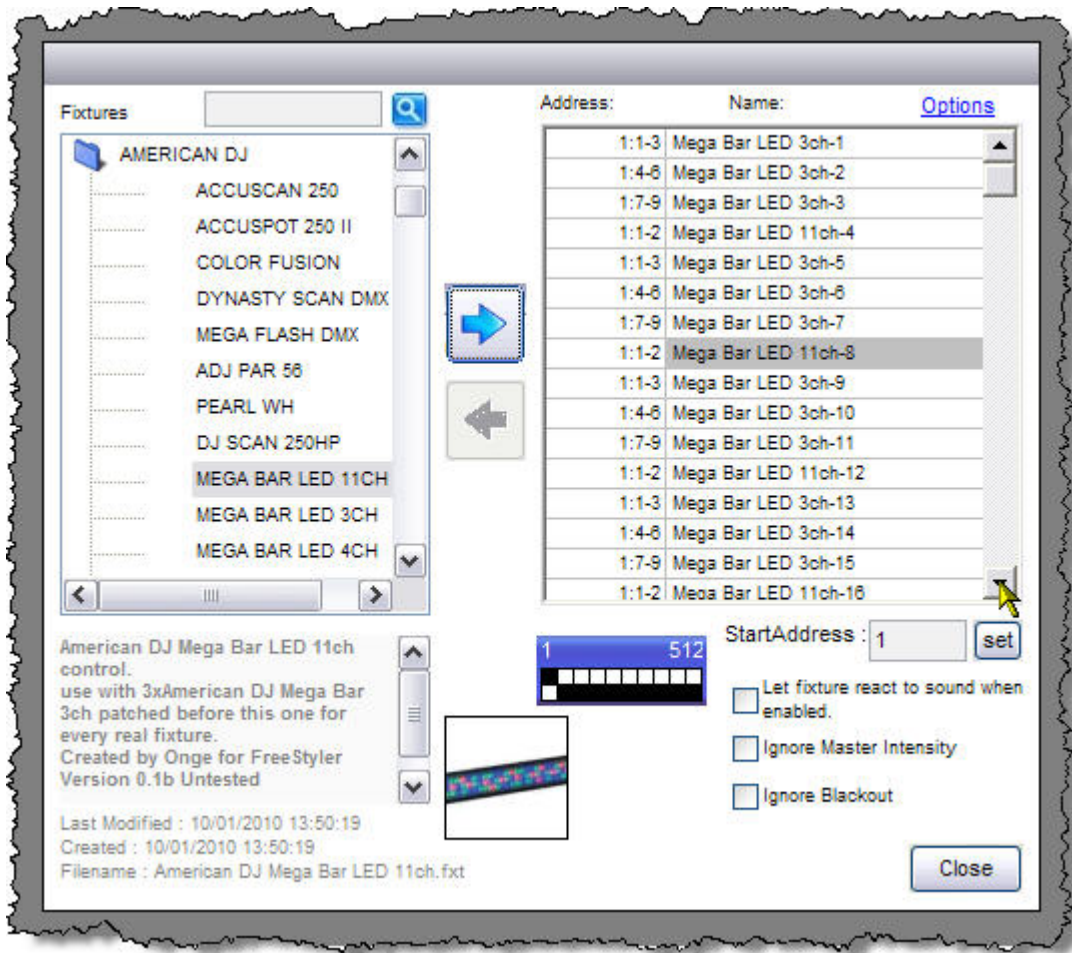


We now need to patch the control channels for this 1 real fixture so select the MEGA BAR LED 11CH fixture in the panel on the left and press the **Add fixture** button as before.



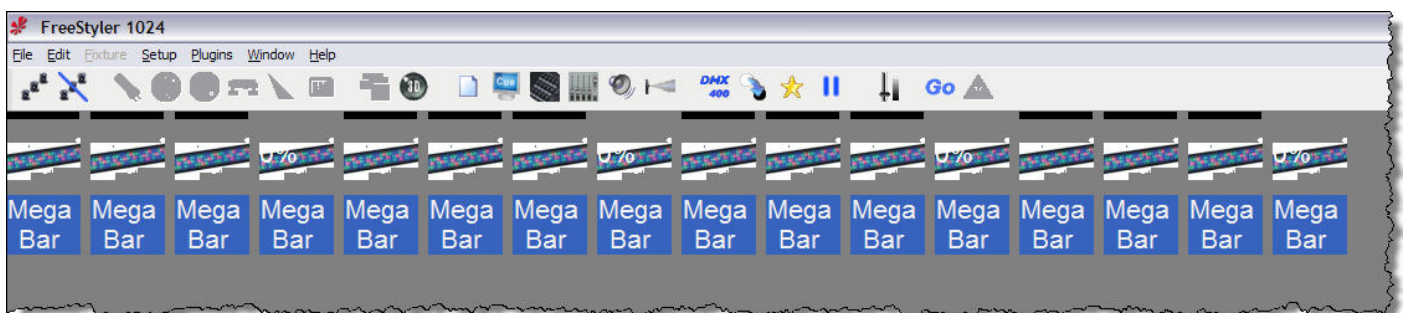


As we only need 1 control fixture per real fixture we change the **number of fixtures to add** to 1 and then press the **Add** button.



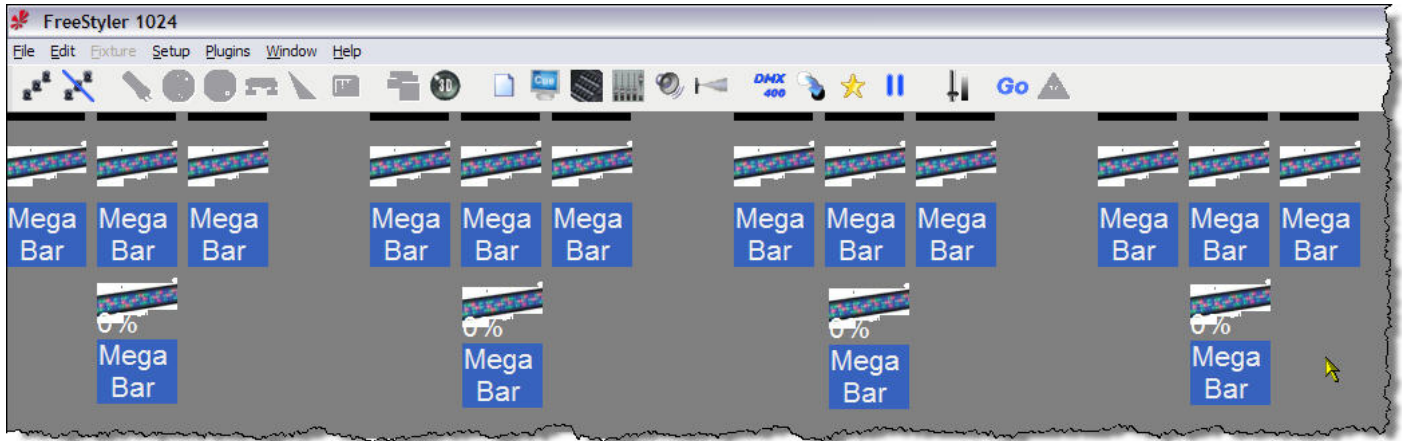
As you can see from the image above I have gone ahead and patched fixtures to allow for 4 x real fixtures. Notice the pattern of 3xRGB fixture and then 1xControl fixture.

Close the Add/Remove fixture panel by clicking the **Close** button.



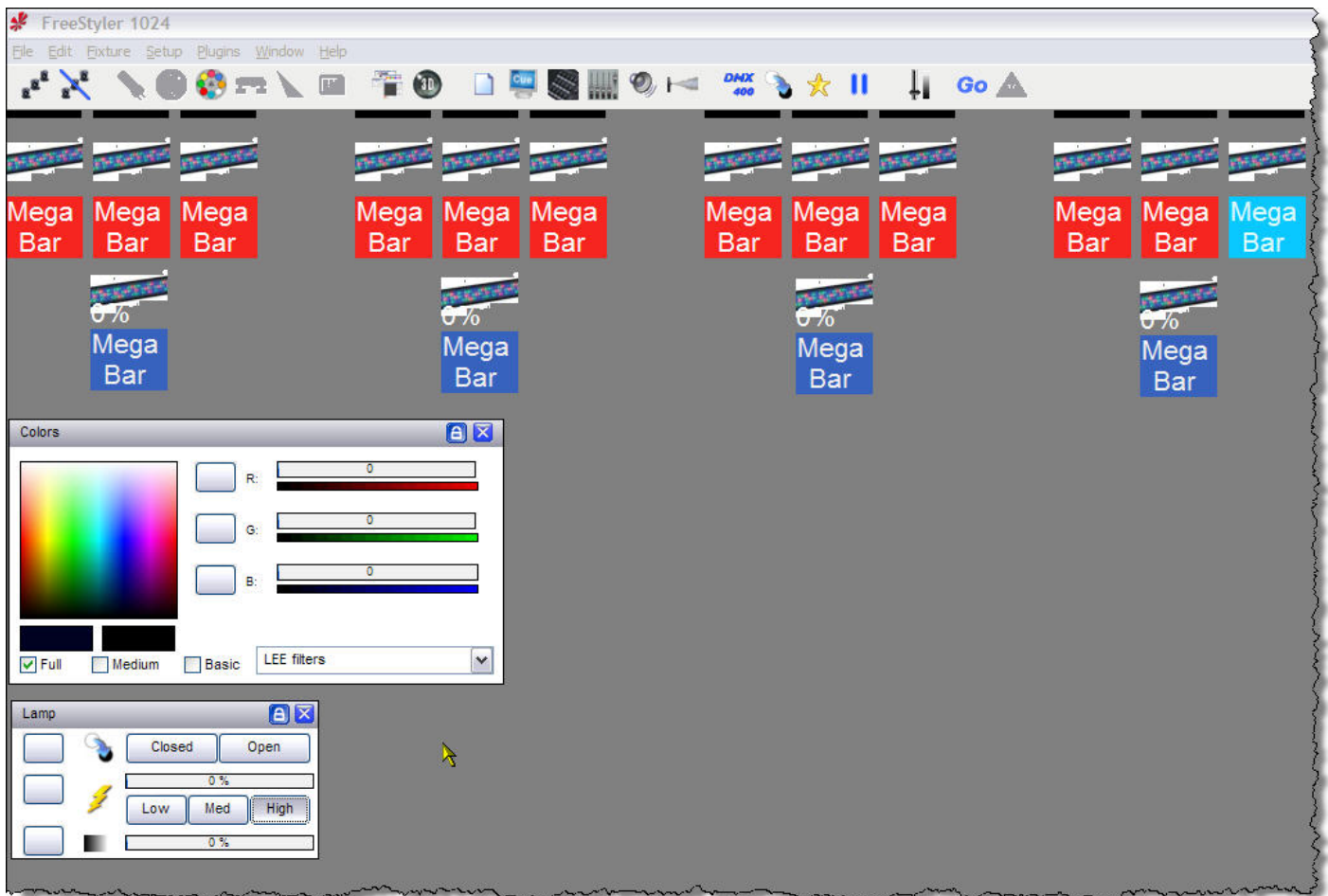
Back on the FreeStyler main layout you should have something like this if you have followed along.

I would recommend going to **Edit** and **Move fixtures** and arrange them like the following layout.



This now is laid out as the four fixtures with the control channel below the RGB elements.

Now you have full control of you Mega Bar LEDs in 11 channel mode. As said right at the top it may not be the easiest way or the best way but it does work.



## 2 Channel American DJ Mega Bar LED

OK, the 2 channel version of this fixture could be done in two ways:-

1. Macros for channel 1 (Macros/Programs) and using one of the functions below the "Lamp channel" such as "Iris" to give you a slider control for channel 2 (Speed/Sound Sensitivity) when you pop out the control panels.
2. Colour wheel for channel 1 and using one of the functions below the "Lamp channel" such as "Iris" to give you a slider control for channel 2 (Speed/Sound Sensitivity) when you pop out the control panels.

Both are as good as each other, but I am going to using option 2 just to show that you can use "labelled" things for other things other than what it says.

Along these lines it is something I have mentioned that we would like to be able to change these "fixed" labels and also the control panel being used should display its new label so you definitely identify the control. For example in the above we are going to use the "Iris" channel to get the slider, now the panel has a picture of an Iris on it panel and even if I change the channel description to "SpeedSound" it does not appear on the panel. So you will have to remember what it is for.

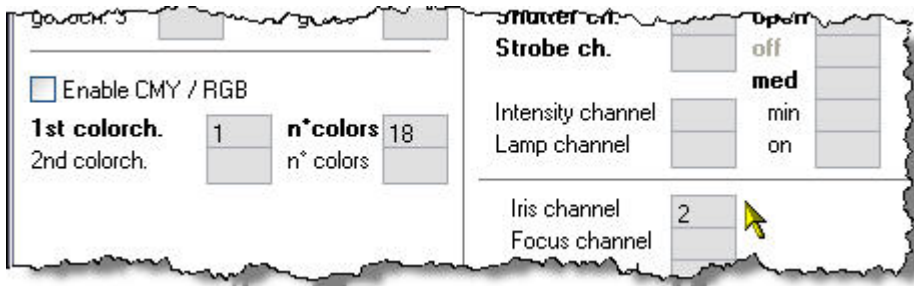
Anyway I digress, let us get on and create this 2 channel fixture.

Open Fixture Creator and click the "Other" button as before in this tutorial and fill in the Manufacturer, Fixture name, get the picture and add comments as instructed before. Put 2 in the **Total Channels** field. See image below for this part completed.



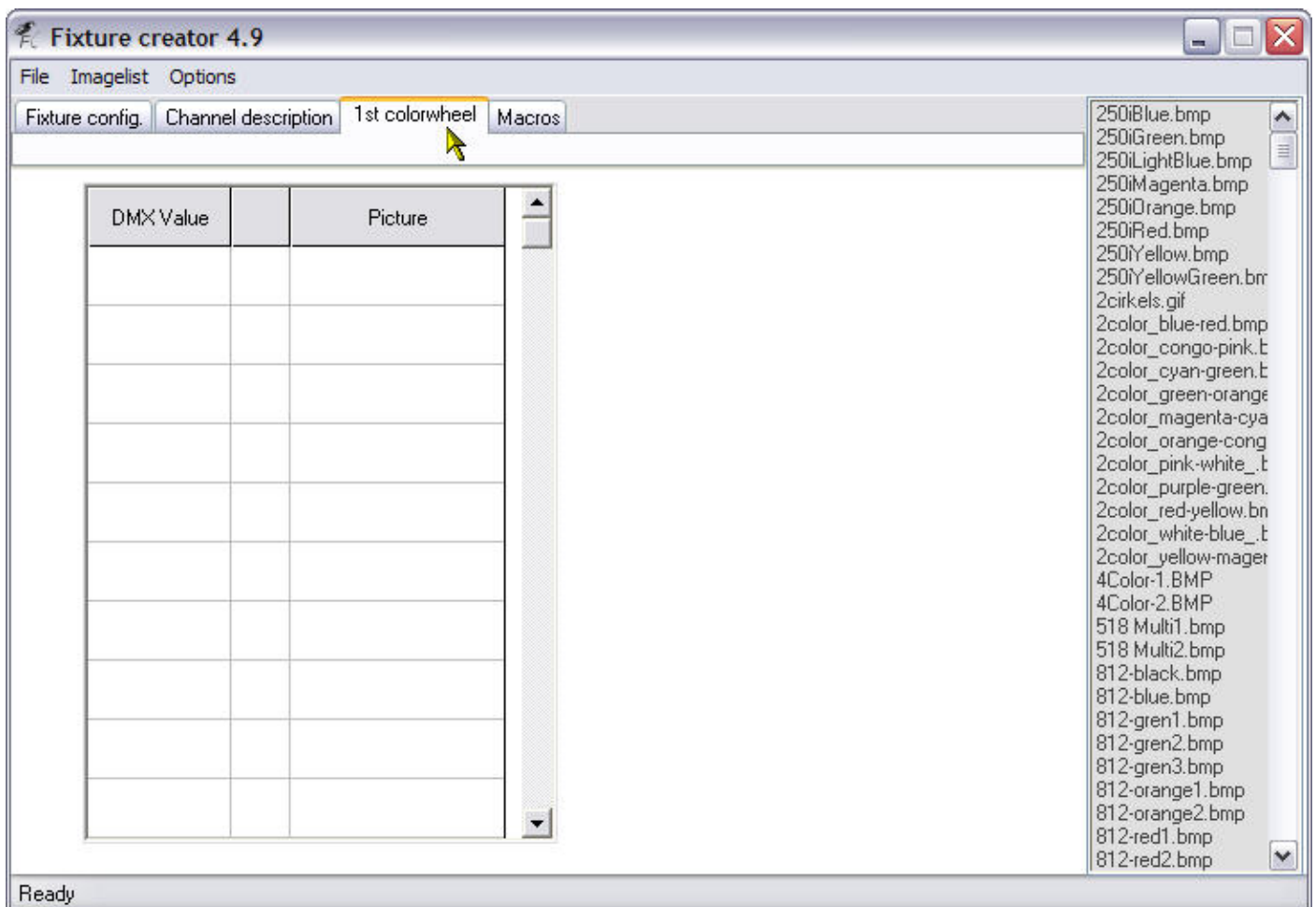
As I said we are going to use the colour wheel to be the control method for the Macros/Programs on channel 1. Count up how many Macros/Programs there for this channel, look for things like "rainbow", "speed", "rotation" and other things where you might want to add more than 1 control per each of these, for example "rainbow" might have values from 128 to 255 and it is the speed of the "rainbow" from slow to fast, so you might want to make that 3 control for that i.e. 1 for slow, 1 for medium and 1 for fast. For this fixture there is nothing like that so we can just count up the number of Macros/Programs in the list. I make it 18.

Let us put that info into the right places on the Fixture Creator "Fixture config." tab.



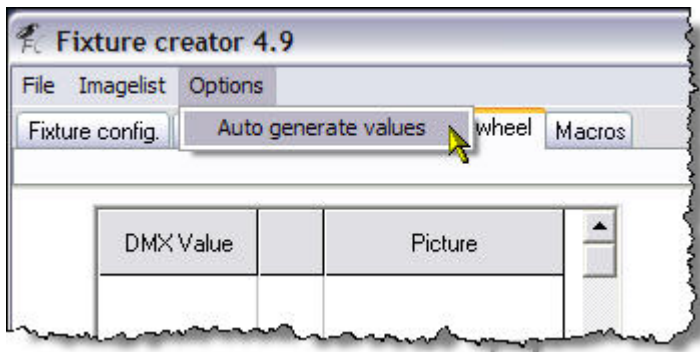
As you can see I have put channel 1 in the **1<sup>st</sup> colorch.** field and the number of Macros/Programs 18 in the **n° colors**. I have also put channel 2 in the **Iris** field.

Right we now need to enter the values for the Macros/Programs into the colour wheel part of Fixture Creator. Click the **1<sup>st</sup> colorwheel** tab and you get the following screen.

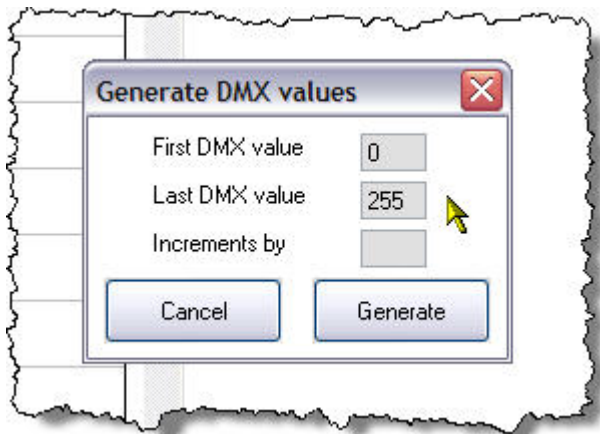


Now this screen has the correct number rows for the number of Macros/Programs that we told it we had when we filled in the **n° colors** on the "Fixture config." tab.

Now we have to enter all the values from channel 1 of the manual for the 2 channel fixture, phew that is going to take a bit of time. Luckily in a recent version there was added an **Auto generate values** option which can fill out this information for us.

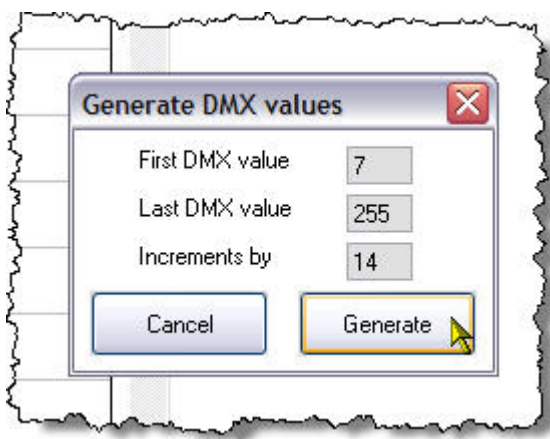


Click **Options** and then **Auto generate values** and you should see the following dialogue box appear.



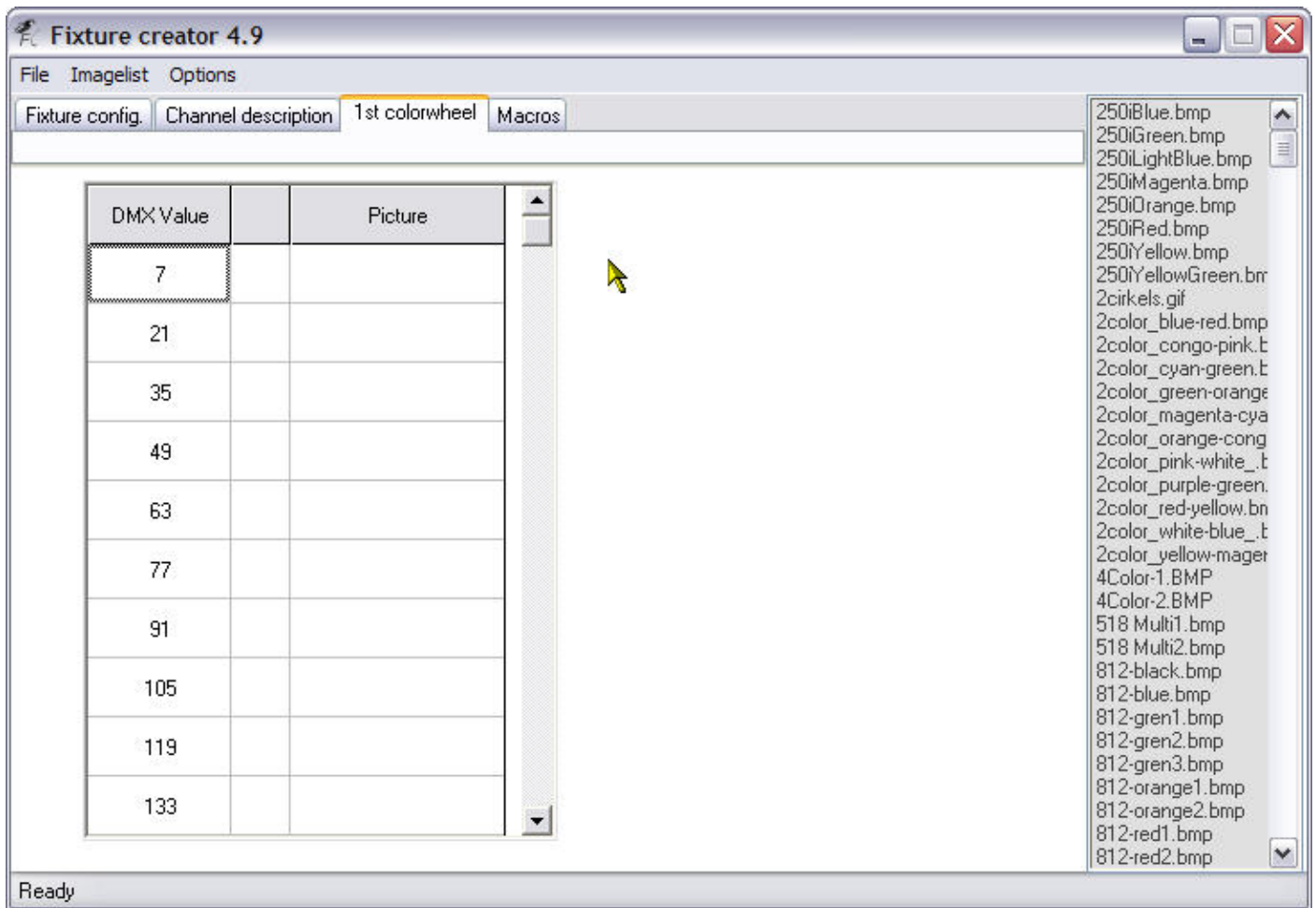
The aim is to try and get each value generated to be in the middle of each of the values allowed for each Macro/Program. Now this is the first time I have actually used this dialogue so I had a little play around before I settled on the values I used.

The values I used are shown in the dialogue below.



Enter the numbers shown and press the "Generate" button and as if by magic, Raph's clever programming, the DMX values have all been filled in.

Now you have seen what it does have a play with the numbers so you get an idea of what it is doing. When you have had enough excitement put the number I used back in.

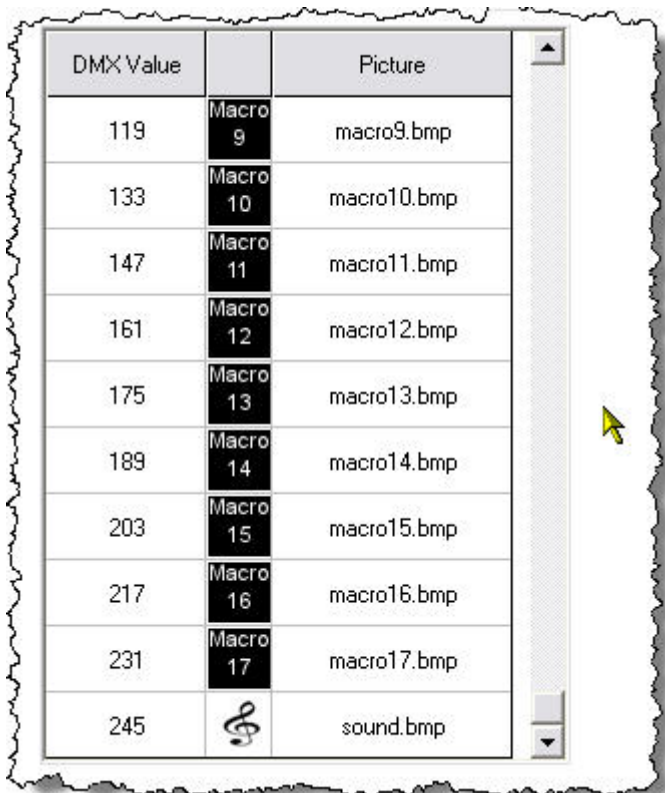
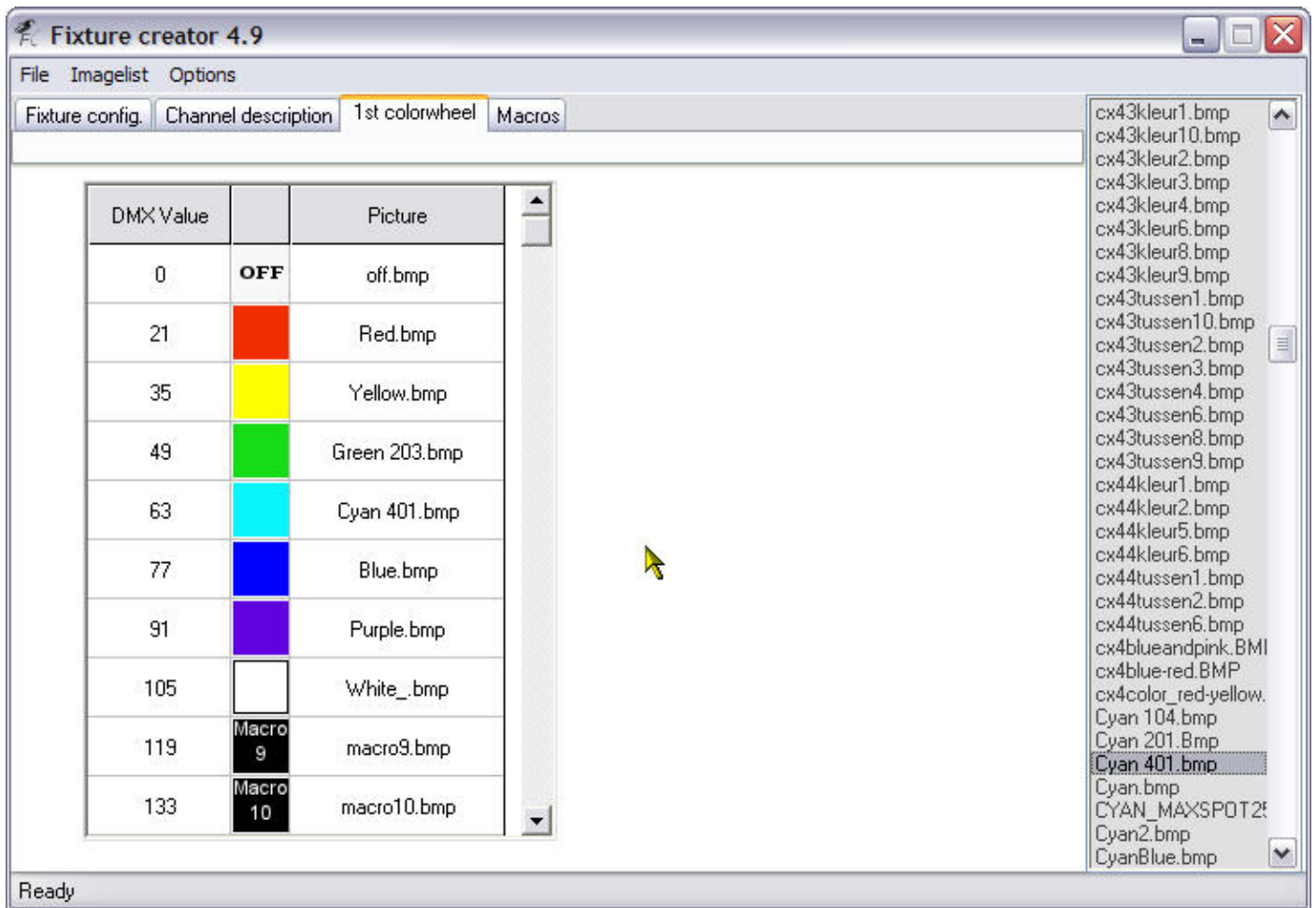


This is what the top half of the list looks like after it has been filled in.

I am a bit of a fuss pot over certain things and I like my "off"s to be at zero, assuming off can be zero, so I would change the first row 7 to a 0.

Next to the numbers are a couple of spaces, these contain an icon and the icon name respectively. So now we have to do is find a relevant icon from the list to right for each of these rows. The first one is easy. Click on the top line (lowest DMX Value) and then scroll down the list on the right until you find **off.bmp** and click it. Notice how the picture and the name appear in the columns next to the DMX Value.

Repeat this process choosing a different icon for each row.



As you can see from the two images above I have added all the icons for each of the values. I have used a generic "Macro" icon for the ones I could not find a relevant

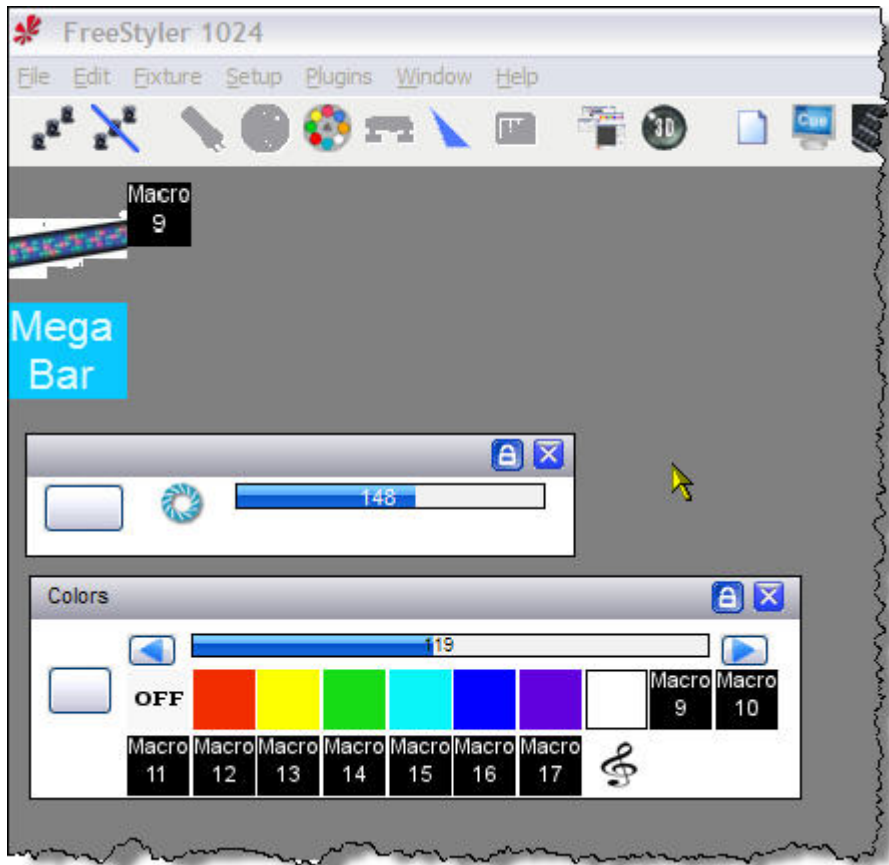


icon for, too lazy really. Please go ahead and change them for more suitable ones or even create your own bitmaps to represent them.

Right that is the fixture done.

We now save the fixture and export it, please see the earlier parts of the tutorial for information on how to do this.

Exit Fixture Creator and you can now start FreeStyler and patch your fixture into it and start using it.



Here you can see the "Iris" panel and the "Colours" panel open for the 2 channel American DJ Mega Bar LED.

Tip: - If you want to use "Blackout" on this fixture then the best way is to do the following



Here I have put channel 1 as the Shutter channel and have just entered the value for open as 1, it will still be off, and closed as 0, which is off. This will enable you to press the "Blackout" button and the lamp will turn off.

This has been done with the fixture I have uploaded.

I will add to this tutorial at a later date to add the other modes.

I hope it has given an insight into how to create multi element RGB fixtures and how to patch them for use in FreeStyler.

If you notice any errors in this tutorial then let me know. I appreciate all comments good or bad but please make them constructive don't just its crap or I don't understand, explain why and I will try and fix it as best as I can.

This tutorial is copyright 2010 by Andre Mark Ray and is for sole use to any member of the FreeStyler Support Forum.