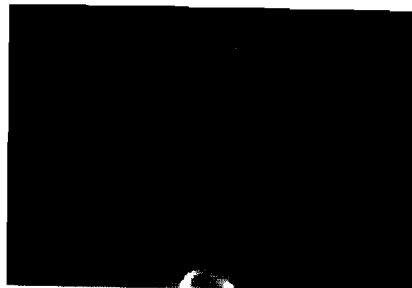
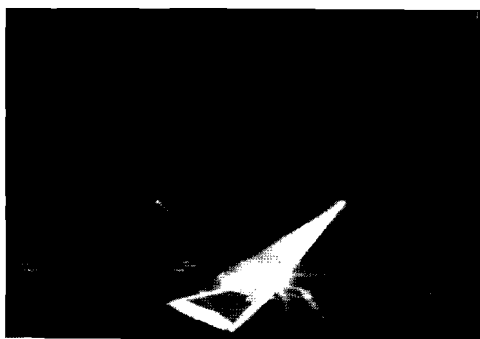
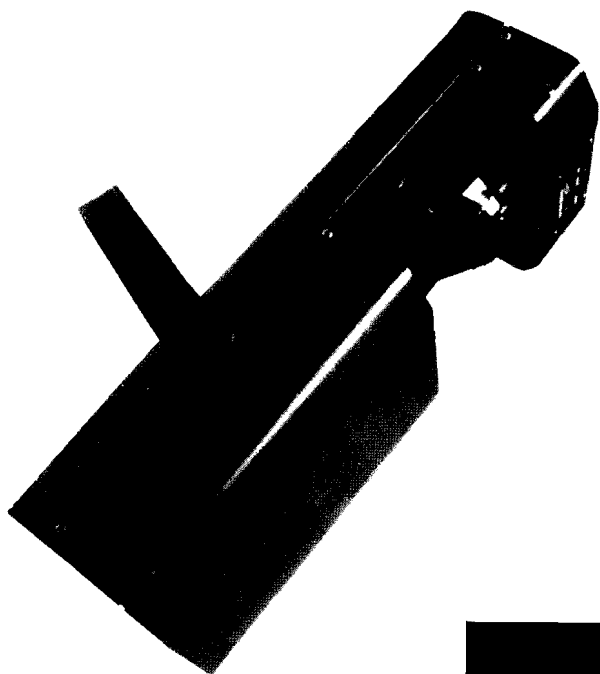




**USER'S MANUAL**

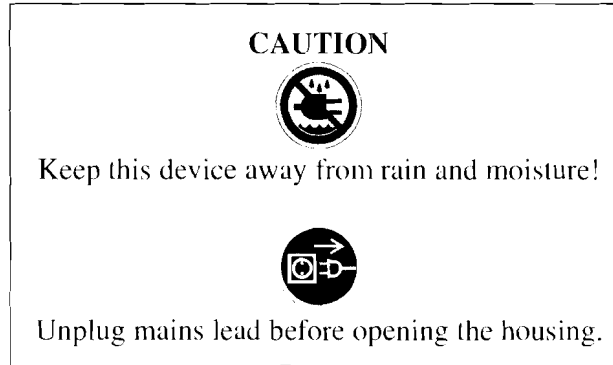
**EXCITER 250**  
**VDP250SC6M - 6 DMX Channels**  
**Professional Scanner**



VER 1.0  
Keep this manual for future needs.



For your own safety, please read this user manual carefully before installing the device.



Every person involved with the installation, operation and maintenance of this device has to:

- be qualified
- follow carefully the instructions of this manual

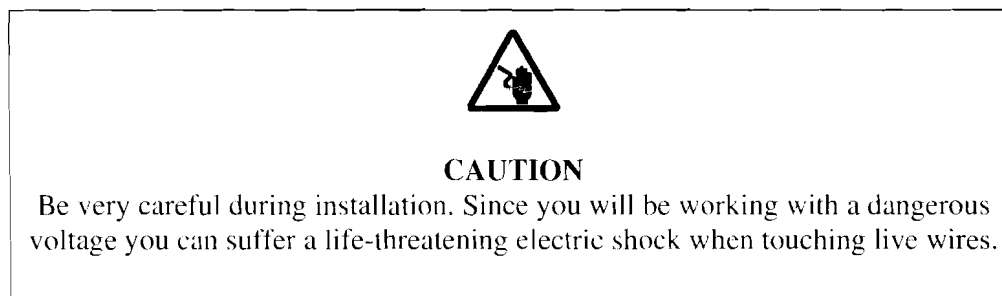
## **INTRODUCTION**

Thank you for having chosen a HQ-POWER 250W six channel scanner. You will see you have acquired a powerful and versatile device. The VDL250SC6 features 6 DMX channels, creating a fast moving effect. Unpack the device. Please check carefully that there is no damage caused by transportation. Should there be any, consult your dealer and don't install this device.

### **Features**

- 7 colours + white + rainbow effect in both directions
- 7 gobos + open + blackout + shutter
- Gobo rotation
- Strobe (1-10 Hz)
- DMX control, music control and master/slave control
- Fuzzy-sound control : program continues automatically even during periods without music
- Digital display
- Manual focus

## **SAFETY INSTRUCTIONS**



This device has left the factory in perfect condition. In order to maintain this condition and to ensure a safe operation, it is absolutely necessary for the user to follow the safety instructions and warning notes written in this user manual.

**IMPORTANT**

Damages caused by the disregard of this user manual are not subject to warranty.  
The dealer will not accept liability for any resulting defects or problems.

If the device has been exposed to temperature changes due to environmental changes, do not switch it on immediately. The arising condensation could damage the device. Leave the device switched off until it has reached room temperature.

This device falls under protection-class I. Therefore it is essential that the device be earthed. A qualified person must carry out the electric connection.

Make sure that the available voltage is not higher than stated at the end of this manual.

Make sure the power cord is never crimped or damaged by sharp edges. If this would be the case replacement of the cable must be done by an authorized dealer.

Always disconnect from the mains, when the device is not in use or before cleaning it. Only handle the power cord by the plug. Never pull out the plug by tugging the power cord.

During initial start-up some smoke or smell may arise. This is normal and should decrease gradually.



**CAUTION**

Never touch the device during operation!  
The housing heats up



**CAUTION**

Never look directly into the light source,  
as sensitive persons may suffer an epileptic shock.

Please be aware that damages caused by manual modifications to the device are not subject to warranty. Keep away from children and non-professionals.

## **GENERAL GUIDELINES**

This device is a lighting effect for professional use on stages, in discotheques, theatres, etc. This fixture is only allowed to be operated with an alternating current of max. 230VAC/50Hz and was designed for indoor use only.

Lighting effects are not designed for permanent operation. Consistent operation breaks will ensure that the device will serve you for a long time without defects. Do not shake the device. Avoid brute force when installing or operating the device.

When choosing the installation spot, please make sure that the device is not exposed to extreme heat, moisture or dust. The minimum distance between light-output from the fixture and the illuminated surface must be more than 0,5 meter.

Always fix the fixture with an appropriate safety cable (VDLSC7 or VDLSC8).

Make sure never to install the device in a place that exceeds the ambient temperature  $T_a$  (see technical specifications at the end of this user manual).

Operate the device only after having familiarized yourself with its functions. Do not permit operation by persons not qualified for operating the device. Most damages are the result of unprofessional operation.

Please use the original packaging if the device is to be transported.

For safety reasons, please be aware that all modifications on the device are forbidden. Furthermore, any other operation may lead to short-circuit, burns, electric shock, lamp explosion, crash, etc. If this device will be operated in any way different to the one described in this manual, the product may suffer damages and the guarantee becomes void.

## **INSTALLATION INSTRUCTIONS**

### *a) Installing or replacing the lamp*



**CAUTION**

Only install the lamp with the device unplugged from the mains.



**CAUTION**

The lamp has to be replaced when it is damaged or deformed.

Before replacing the lamp let it cool down, because during operation, the lamp can reach temperatures of up to 700°C. Wait at least 10 minutes after use before opening the housing.

During the installation of halogen lamps do not touch the glass bulbs bare handed. Always use a cloth to handle the lamps during insertion and removal.

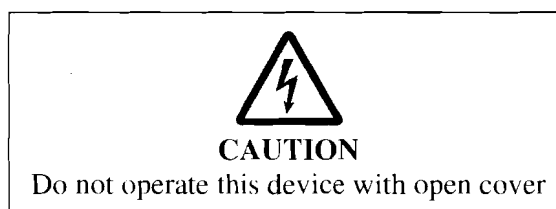
Do not install lamps with a higher wattage. They generate higher temperatures than for which the device was designed for.

For the installation, you need a 90V / 250W MSD GY9.5 lamp :

- ordercode : LAMP250MSD or LAMP250MSD/2

- 1) Unscrew the 2 screws marked with X and Y on the back of the housing, holding the plate where the lamp is underneath.
- 2) Carefully insert the lamp into the socket. Please remember there is only one way to insert the lamp. Gently slide the lamp and its lamp holder back into place and fasten the 2 screws.
- 3) On the access plate there are 3 small screws marked A,B and C, which are used to adjust the lamp holder in the lamp housing. You can adjust the 3 screws to fine-tune the position of the lamp to get the maximum light output.

Please remember the lamp is not a hot-restrike type, you must wait for approximately 10 minutes after having turned off the lamp before you can turn it back on again.



#### *b) Replacing the fuse*

If the lamp burns out, chances are the fuse on the rear panel might too. Only replace the fuse with a fuse of the same type and rating (see technical details at the end of this manual).



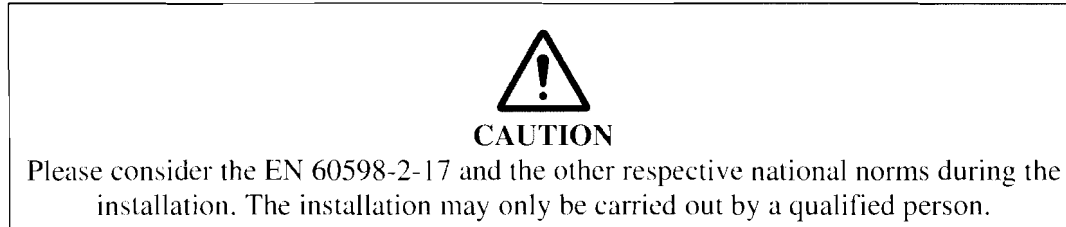
For the installation, you need one 5A / 250VAC 5 x 20 mm fuse :

- ordercode : FF5N

**Procedure :**

- 1) Remove the fuse holder cap on the rear panel underneath the power connector
- 2) Remove the old fuse and replace it by the new one with the same technical specifications
- 3) Replace the fuse holder cap in the housing

*c) Mounting the device*



The installation of the effect has to be built and constructed in a way that it can hold 10 times the weight for 1 hour without any harming deformation.

The installation must always be secured with a secondary safety attachment, e.g. an appropriate safety cable (VDLSC7 or VDLSC8).

Never stand directly below the device when mounting, removing or servicing the fixture  
The operator has to make sure the safety relating and machine technical installations are approved by an expert before taking the device into operation for the first time. These installations have to be approved by a skilled person once a year.

**Procedure:**

The effect should be installed outside areas where persons may reach it, walk by or be seated.

Overhead mounting requires extensive experience, including amongst others calculating working load limits, installation material being used, and periodic safety inspection of all installation material and the device. If you lack these qualifications, do not attempt the installation yourself. Improper installation can result in bodily injury.

Before mounting make sure that the installation area can hold a minimum point load of 10 times the device's weight.



Adjust the desired inclination angle via the mounting bracket and fix the bracket screws tightly.



**CAUTION**

The electric connection may only be carried out by a qualified electrician.

Connect the fixture to the mains with the power plug. In general, lighting effects should not be connected to dimming packs.



**CAUTION**

Before taking into operation for the first time, the installation has to be approved by an expert.

## **OPERATING INSTRUCTIONS**

This fixture has 8 modes of operation which will be shown on the display. Select the corresponding mode by means of the MODE button and the UP and DOWN buttons.

**001 0**: DMX mode

**M1M N**: Music controlled (master mode)

**M2M N**: Auto program (master mode)

**M3M N**: standby (master mode)

**S1S 5**: Slave 1 (slave mode)

**S2S 2**: Slave 2 (slave mode)

**S3S 5**: Slave 3 (slave mode)

**S4S 5**: Slave 4 (slave mode)

Please remember when you change modes, you have to switch the device off and back on again.

### Music-controlled Mode

The fixture will react to the music through the built-in microphone.

### Master/slave mode

If you have several fixtures, you can chain them together and let them make synchronous movement, controlled by the master device.

The master unit will drive all slave units. Connect the master and slave units using the provided DMX cable.

When in this mode, the built-in microphone (when in music mode) or auto program function of the master machine controls all fixtures and they will change colour rhythmically and synchronously.

### Program mode

To make the fixture run its internal program continuously.

### DMX mode

All fixtures should be given a DMX start address when using a DMX signal, so that the correct fixture responds to the correct control signals. This digital start address is the channel number from which the fixture starts to “listen” to the digital control information being sent out from the DMX controller. The allocation of this start address is achieved by setting the correct number by means of the DIP switch located on the back of the VDP250SC6M.

As you prefer, you can set the same start address for all or a group of fixtures or select a different one for each fixture individually.

If you set the same address, all the units will start to “listen” to the same control signal from the same channel number. In other words : changing the settings of one channel will affect all the fixtures simultaneously.

If you set a different address, each unit will start to “listen” to the channel number you have set, based on the quantity of control channels of the unit. In other words : changing the settings of one channel will affect only the selected fixture.

In the case of the VDP250SC6M, which is a 6 channel fixture, you will have to set the start address of the first unit to 1, the second unit to 7 (1 + 6), the third to 13 (7 + 6), and so on.

Make sure you are in DMX mode. Select the correct start address by means of the UP and DOWN buttons.

The LED next to the DIP switches indicates the status of the DMX signal.

LED flashing : DMX signal present

LED steady on : no input DMX signal

Channel configuration

CHANNEL 1 : Pan  
 CHANNEL 2 : Tilt  
 CHANNEL 3 : Colour wheel  
 CHANNEL 4 : Gobo wheel  
 CHANNEL 5 : Gobo rotation  
 CHANNEL 6 : Strobe

Detailed DMX values per channel

|           | Description   | From         | To  | Function                              |
|-----------|---------------|--------------|-----|---------------------------------------|
| CHANNEL 1 | Pan           | 0            | 255 | 8 bit                                 |
| CHANNEL 2 | Tilt          | 0            | 255 | 8 bit                                 |
| CHANNEL 3 | Colour Wheel  | 0            | 18  | White                                 |
|           |               | 18           | 35  | Dark Blue                             |
|           |               | 36           | 53  | Pink                                  |
|           |               | 54           | 71  | Light Green                           |
|           |               | 72           | 89  | Orange                                |
|           |               | 90           | 107 | Light Blue                            |
|           |               | 108          | 126 | Yellow                                |
|           |               | 127          |     | Red                                   |
|           |               | 128          | 191 | Forward Rainbow effect                |
|           |               | 192          | 255 | Backward Rainbow effect               |
| CHANNEL 4 | Gobo Wheel    | 0            | 15  | Open                                  |
|           |               | 16           | 31  |                                       |
|           |               | 32           | 47  |                                       |
|           |               | 48           | 63  |                                       |
|           |               | 64           | 79  |                                       |
|           |               | 80           | 95  |                                       |
|           |               | 96           | 111 |                                       |
|           |               | 112          | 127 |                                       |
|           |               | 128          | 191 | Forward gobo cycle (slow -> fast)     |
|           |               | 192          | 255 | Backward gobo cycle (slow -> fast)    |
| CHANNEL 5 | Gobo Rotation | 0            | 15  | No rotation                           |
|           |               | 16           | 135 | Forward gobo rotation (fast-> slow)   |
|           |               | 136          | 255 | Backward gobo rotation (slow -> fast) |
| CHANNEL 6 | Strobe        | 0            | 5   | Shutter closed                        |
|           |               | 6            | 128 | Dimmer control                        |
|           |               | 129          | 131 | Reset (after 3-5 seconds)             |
|           |               | 132          | 139 | Shutter open                          |
|           |               | 140          | 199 | Strobe (slow -> fast)                 |
|           |               | 200          | 249 | Random strobe (slow -> fast)          |
| 250       | 255           | Shutter open |     |                                       |

By means of the provided DMX cable it is possible to chain multiple units together for synchronous operation.

## CLEANING AND MAINTENANCE

The following points have to be considered during the inspection :

- 1) All screws for installing the devices or parts of the device have to be tightly connected and must not be corroded.
- 2) There must not be any deformations on the housing, lens, fixations and installation spots (ceiling, suspension, trussing).
- 3) Mechanically moved parts must not show any traces of wearing and must not rotate with unbalances.
- 4) The electric power supply cables must not show any damage, material fatigue or sediments. Further instructions depending on the installation spot and usage have to be adhered by a skilled installer and any safety problems have to be removed.



### **CAUTION**

Disconnect from mains before starting maintenance operation.

We recommend a frequent cleaning of the device. Please use a moist, lint-free cloth. Never use alcohol or solvents.

There are no serviceable parts inside the device except for the lamp and the fuse. Please refer to the instructions under "Installation instructions".

Should you need any spare parts, please order genuine parts from your local dealer.

## TECHNICAL SPECIFICATIONS

*Power supply* : max. 230VAC, 50Hz

*Power consumption* : max. 260W

*Fuse* : 5A, 250VAC (5 x 20mm)

*Dimensions* : 525 x 300 x 150 mm

*Weight* : 15 kg

*Lamp* : 250W / 90V MSD GY9.5

*Maximum ambient temperature  $T_a$*  : 45° C

*Maximum housing temperature  $T_a$*  : 60° C

*Signal* : international standard DMX 512



*Remark* : errors and omissions for every information given in this manual excepted. All information is subject to change without prior notice.

© 2003 Velleman Components NV