

Hello,

I would like to ask you for help me with control Freestyler via MIDI from keyboard Yamaha PSR S950.

I'm using Freestyler version no. 3.6.35

I had prepared 20 scenes (See enclosed picture no. 1).



Scenes are working properly, but I must to start and stop it manually.

I would like to control it with MIDI command (special track in MIDI songs)

I connected Yamaha PSR S950, set midi settings in keyboard (transmitt notes via channel 1)

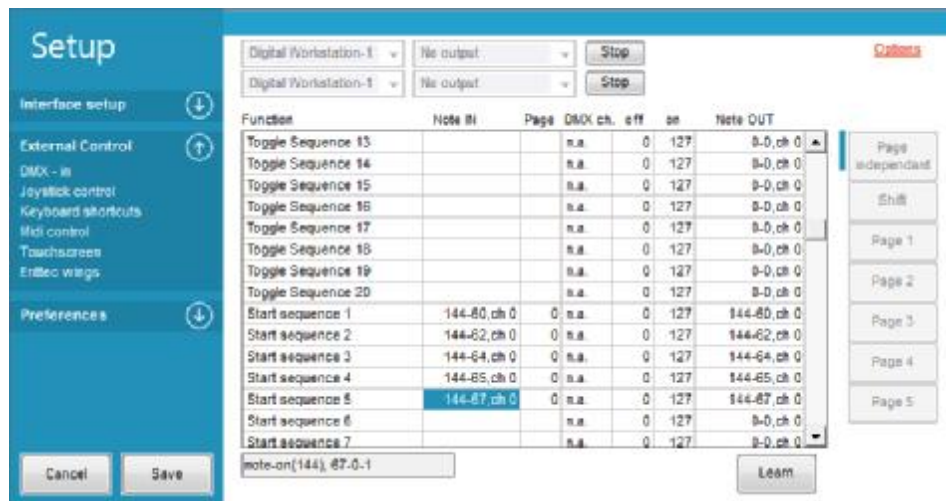
See picture:



I set MIDI setup in Freestyler

I set the MIDI command for Start sequence no. 1, sequence no. 2using the LEARN button (the communication works).

I played single notes for each sequence. For example C for sequence no. 1, D for sequence no. 2



Save button

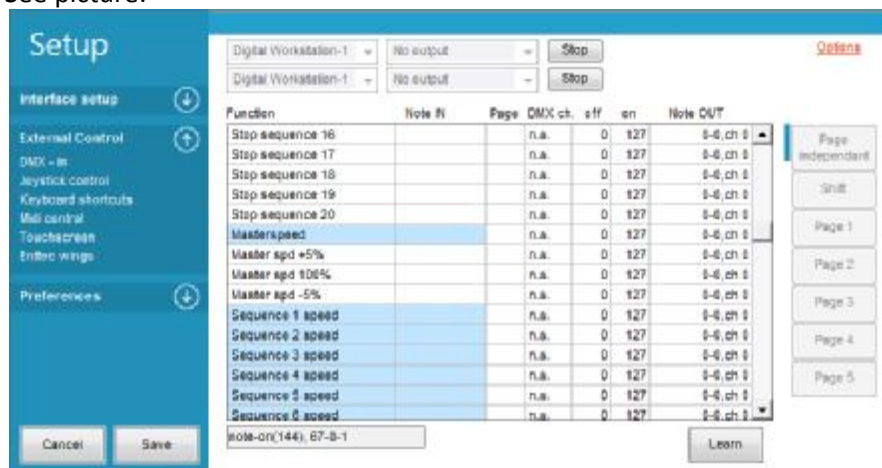
Now I tried to start sequence with MIDI via keyboard.

Now I played again the note (assigned for sequence 1) but nothing happened. Sequence doesn't start.

Is it necessary to set something else in Freestyler or in keyboard?

Why some function of the freestyler are with blue background?

See picture:



I tried to set this function with blue background and it is ok. Launching this function with midi is without problem.

Can you please help me with the described problem?