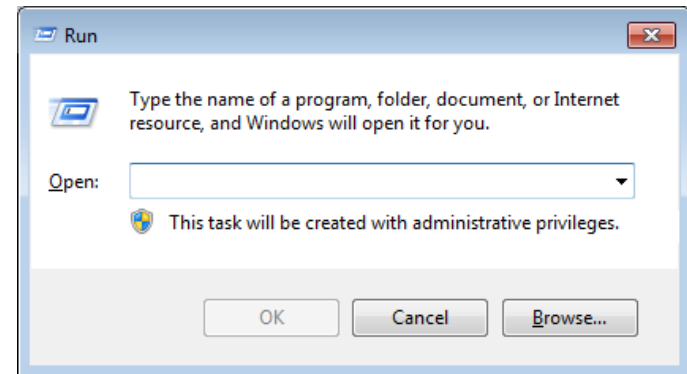


Windows Button



Type Run in Search and open



Type without inverted commas. 'hdwwiz' then click ok.

Add Hardware

Welcome to the Add Hardware Wizard

This wizard helps you install driver software to support older devices that do not support Plug-and-Play and which are not automatically recognized by Windows.

You should only use this wizard if you are an advanced user or you have been directed here by technical support.



If your hardware came with an installation CD, it is recommended that you click Cancel to close this wizard and use the manufacturer's CD to install this hardware.

To continue, click Next.

< Back

Next >

Cancel

Add Hardware

The wizard can help you install other hardware

The wizard can search for other hardware and automatically install it for you. Or, if you know exactly which hardware model you want to install, you can select it from a list.

What do you want the wizard to do?

- Search for and install the hardware automatically (Recommended)
- Install the hardware that I manually select from a list (Advanced)

< Back

Next >

Cancel

Add Hardware

From the list below, select the type of hardware you are installing

If you do not see the hardware category you want, click Show All Devices.

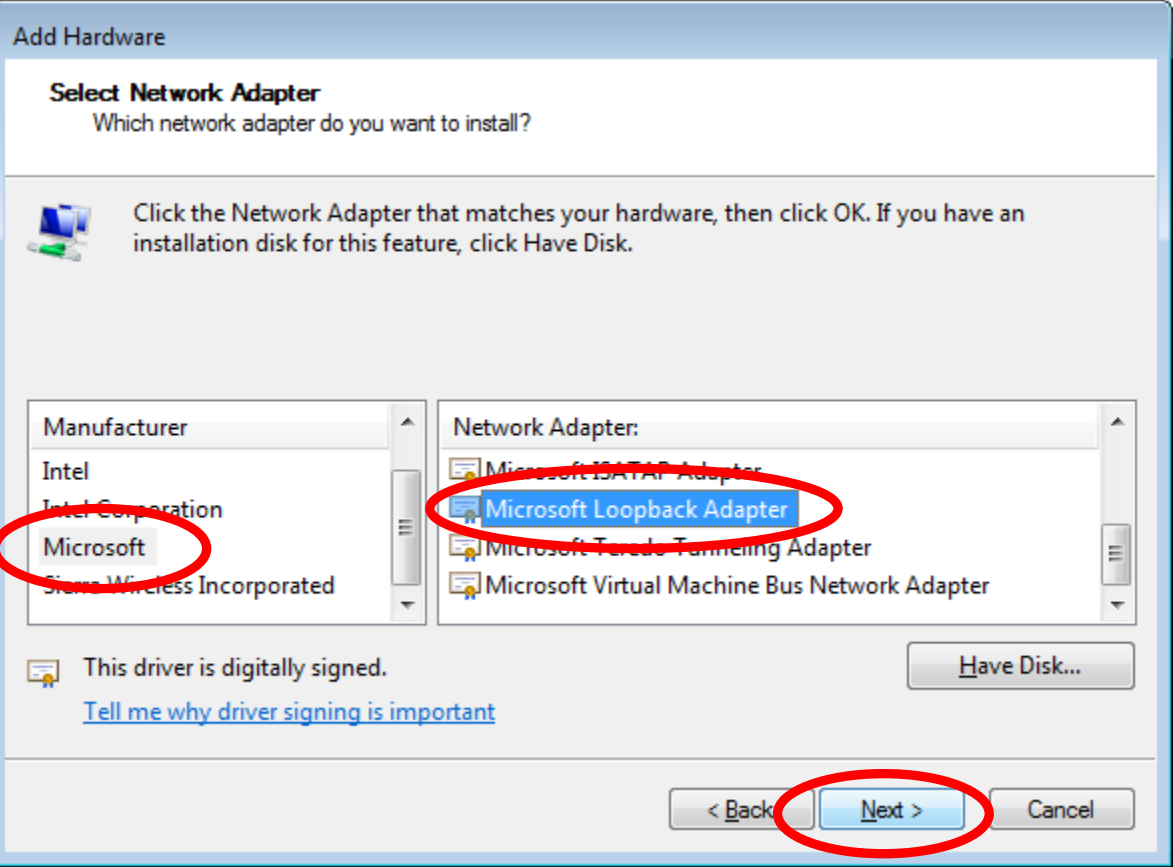
Common hardware types:

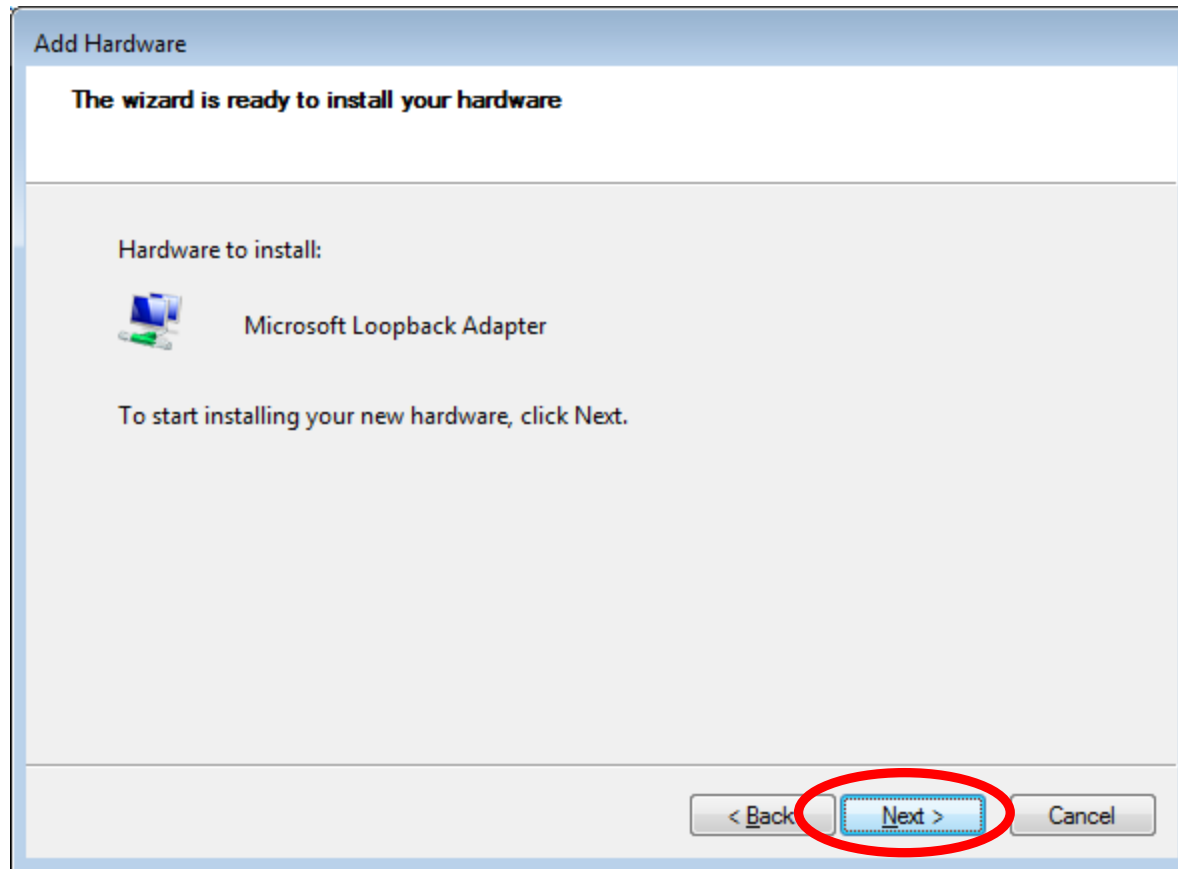
- Infrared devices
- Media Center Extender
- Memory technology driver
- Modems
- Multi-port serial adapters
- Network adapters**
- PCMCIA adapters
- Portable Devices
- Ports (COM & LPT)

< Back

Next >

Cancel





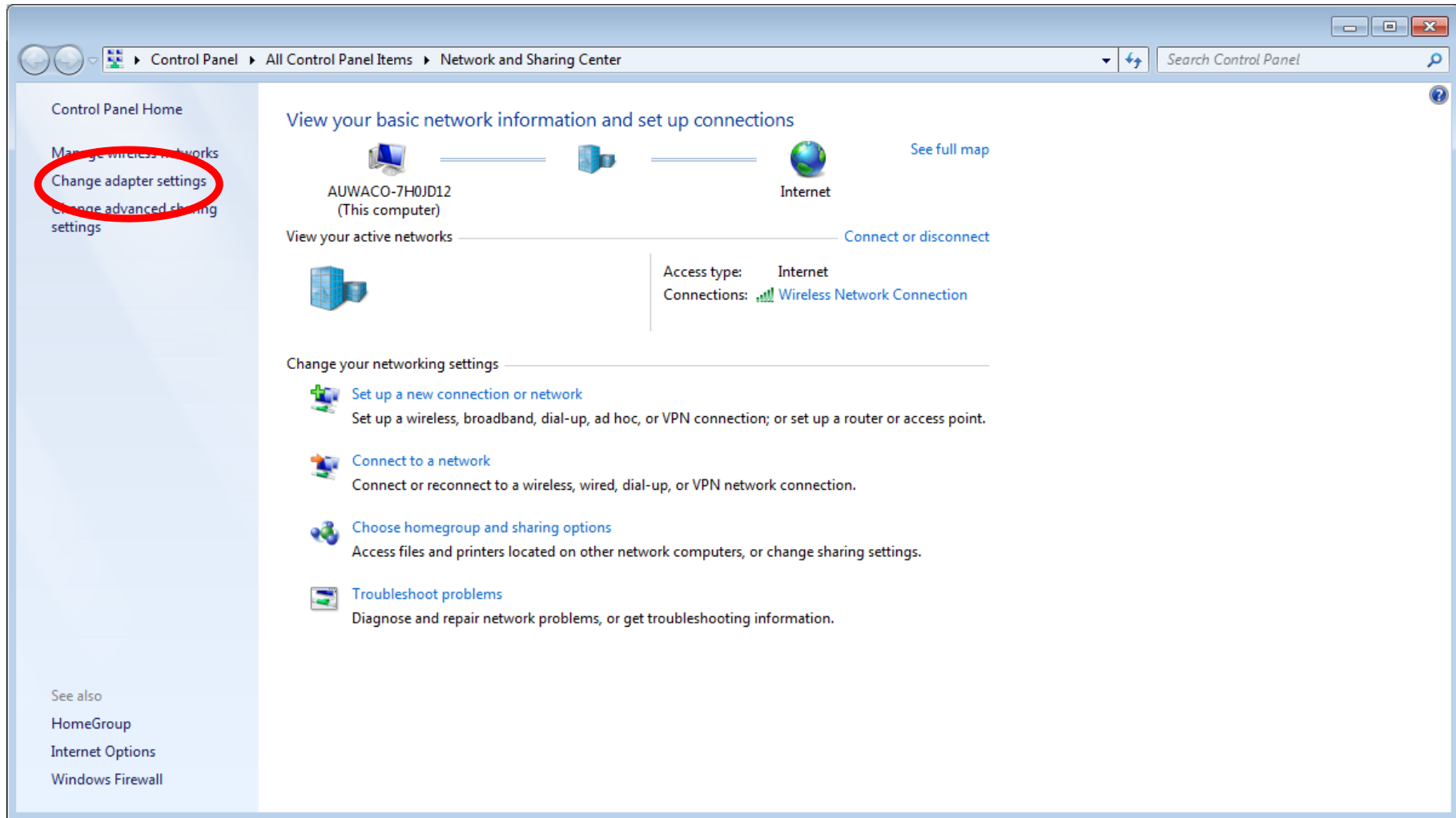
Done now to the next stage.

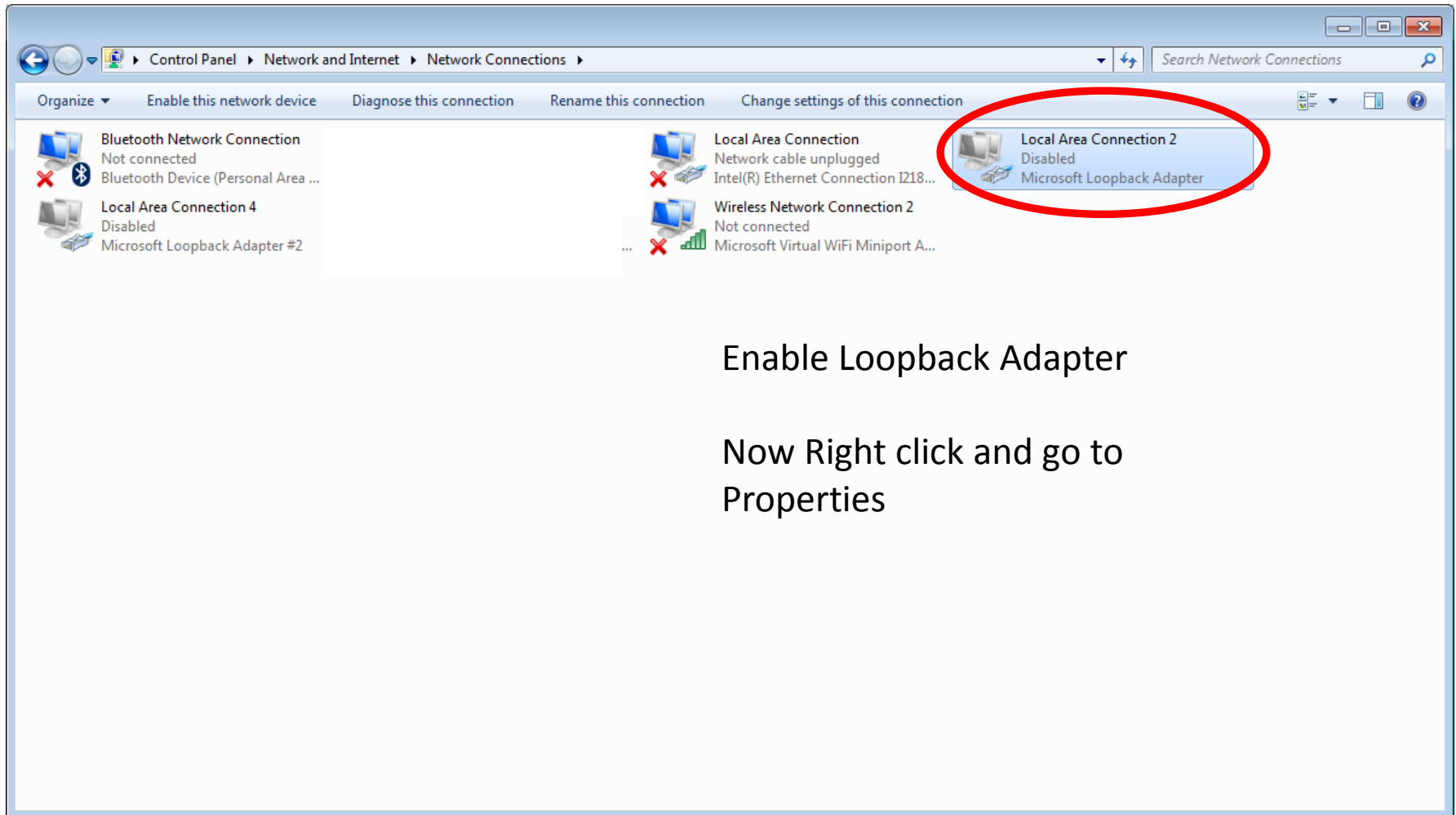
Open Control Panel

Go to Network and Sharing Centre

(XP is Network Settings)

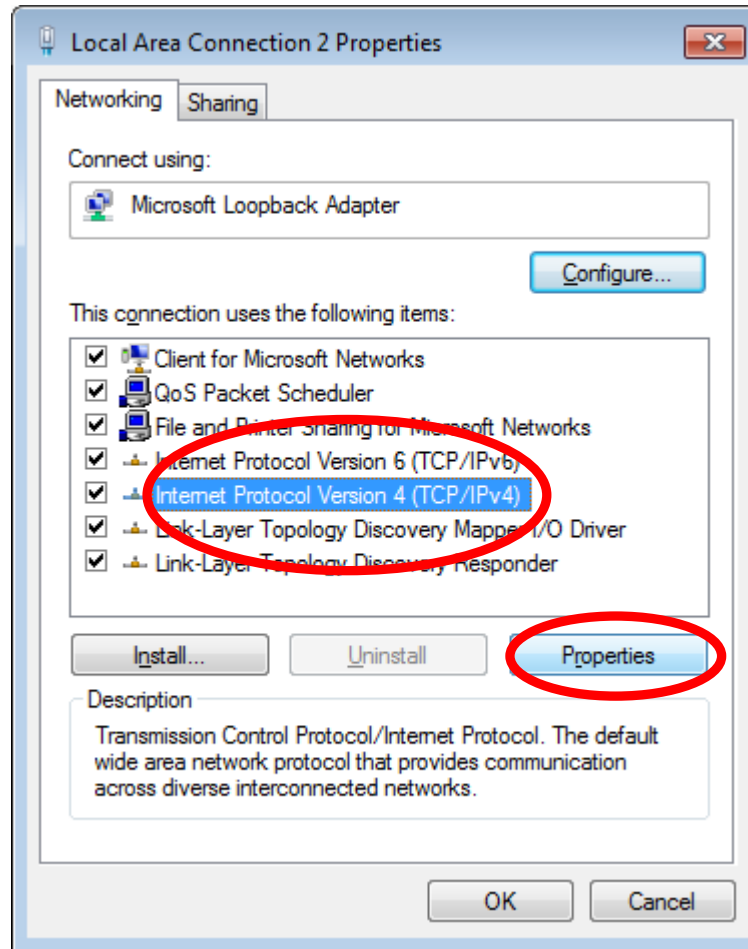
Change Adapter Settings



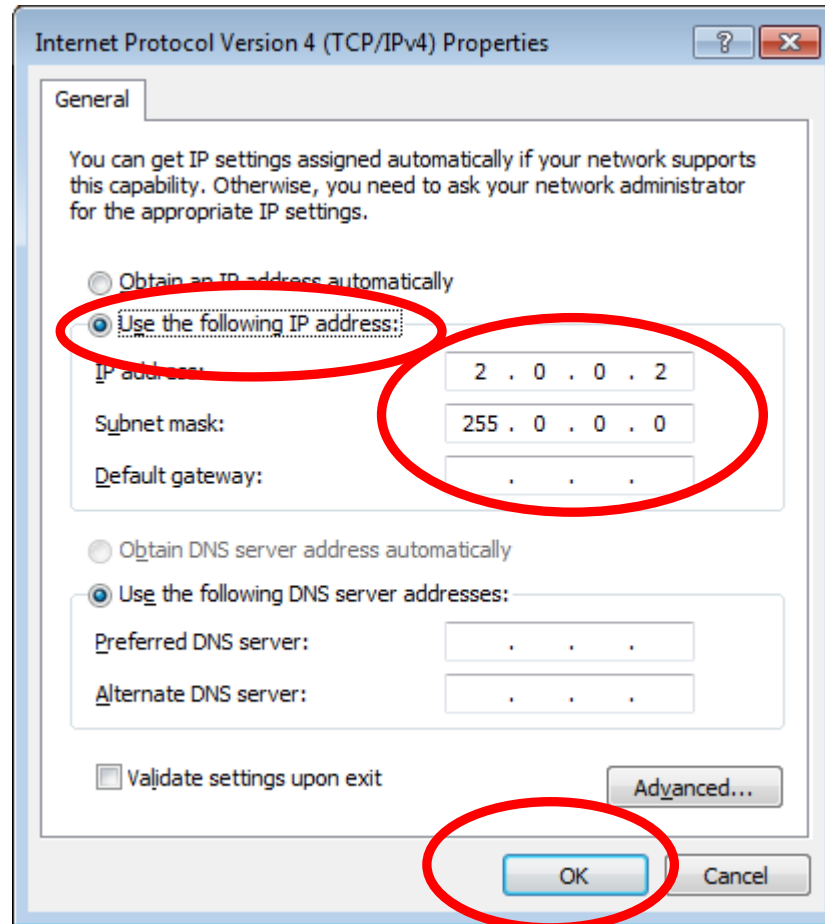


Enable Loopback Adapter

Now Right click and go to
Properties



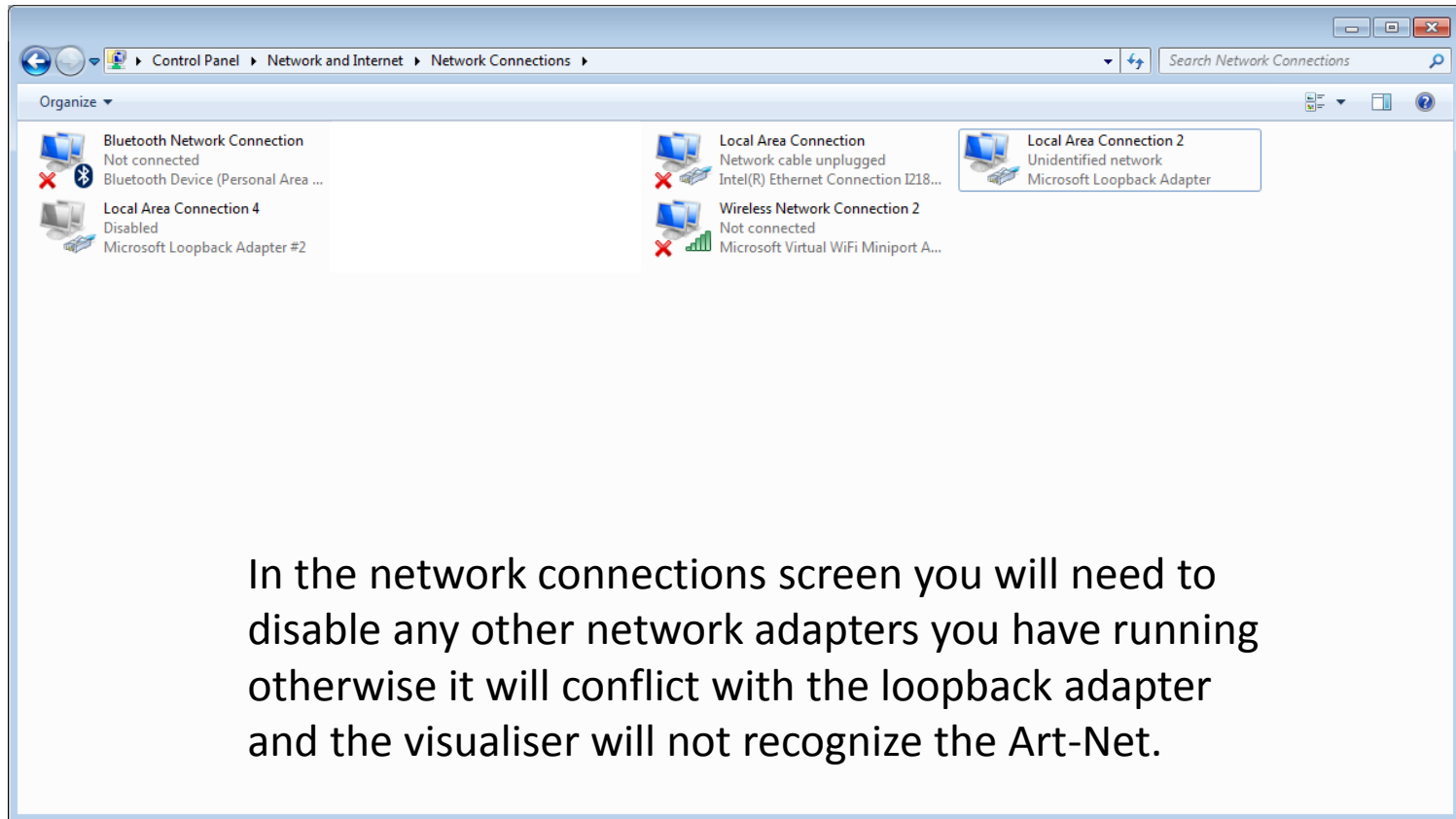
Select IPV4 then properties



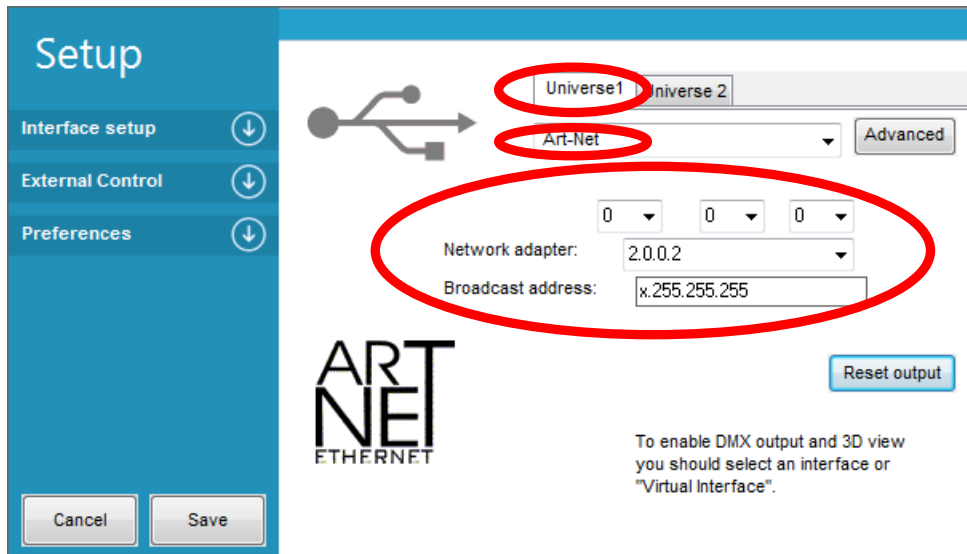
Select use the following IP Address

Now enter the settings above

Click ok then close.



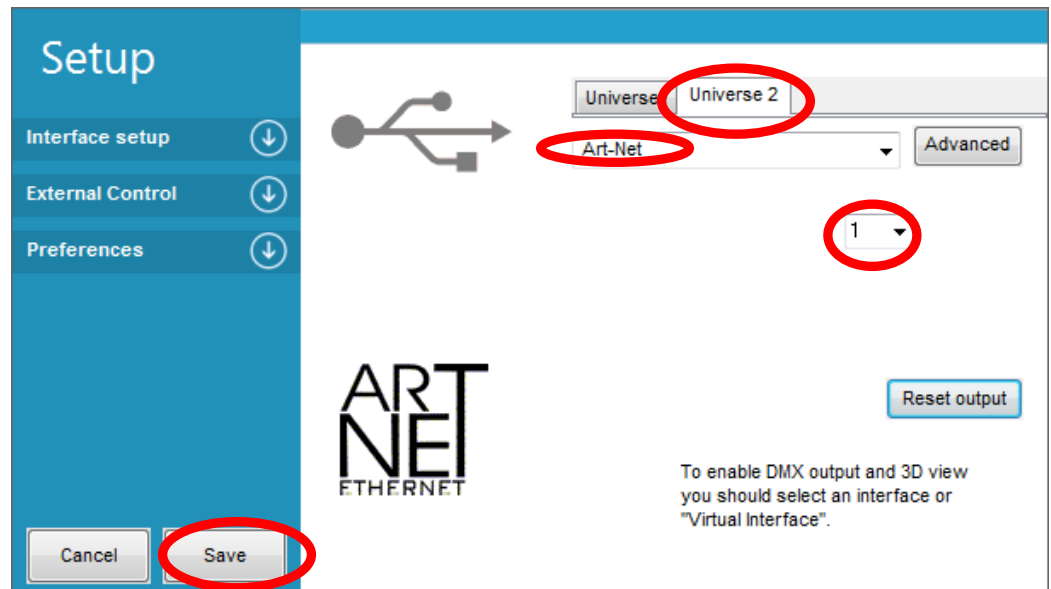
Now start FreestylerX2 and go to Freestyler Setup



Now select Art-Net

In your network adapter select the one shown

Now click the Universe 2 tab and select ArtNet and 1 then save and restart Freestyler X2.



Now start Magic 3D Easy View



Now select Art-Net and enable all universes as below.



Done.

The Visualiser should now be under
Freestyler X2 control under both universes