

## Chauvet Vue VI Fixture File

Import *Chauvet Vue VI - v1.pff* into FixtureCreator and then add the new fixture to FreeStyler 512.

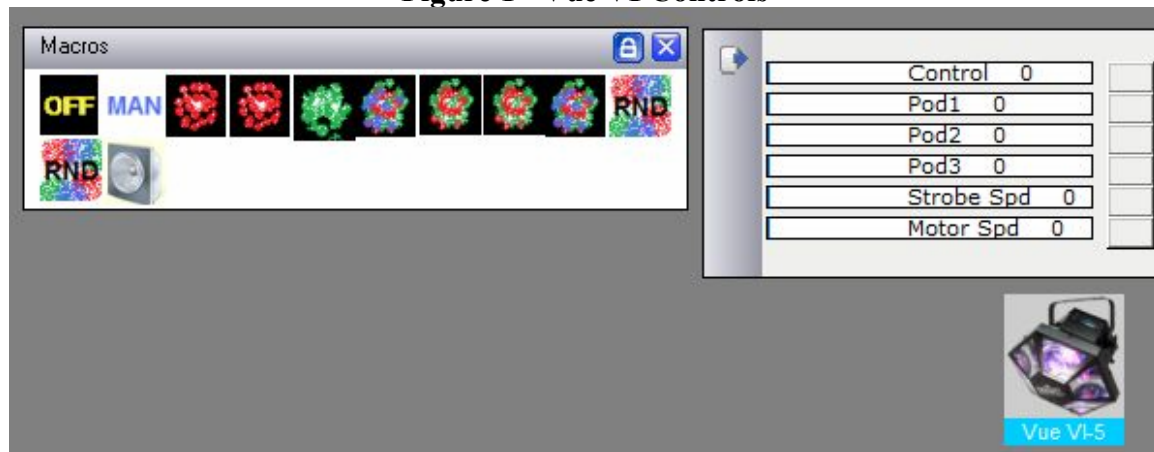
There are six DMX channels as described in Table 1.

**Table 1 - DMX Channels**

DMX Channel	Label	Description
1	Control	Allows selection of dimmer mode (manual mode), one of nine automatic programs, or active sound mode
2	Pod1	Allows individual color selection or pod-specific automatic program
3	Pod2	Allows individual color selection or pod-specific automatic program
4	Pod3	Allows individual color selection or pod-specific automatic program
5	Strobe Spd	Strobe speed (no strobe, or from slow to fast)
6	Motor Spd	Motor speed (stop, or from slow to fast)

You can control the Vue VI either manually or allow it run built-in programs. There are 12 macros provided with the fixture file, as illustrated in Figure 1.

**Figure 1 - Vue VI Controls**



The first macro, "OFF", blacks out the device entirely. Macro "MAN" puts the Vue VI in manual control mode. Use the individual DMX channel controls in manual mode (please consult the user guide for specific DMX values).

The user guide lists nine stand-alone automatic programs (stand-alone mode 1, mode 2, etc.). Rather than labeling the macros correspondingly, pictures are provided to represent the colors used in each program, which should be more meaningful than mode 1, mode 2, etc. (unless you are colorblind). The two "RND" programs randomly switch colors. Finally, active sound mode is selected by clicking the speaker picture.

I hope you find this fixture file convenient.